

# Child Welfare Court Data Metrics

**KEY INDICATORS 2016**

**NEW YORK STATE**



**NEW  
YORK  
STATE**



**UNIFIED  
COURT SYSTEM**



**Child Welfare**

**Court Improvement Project**

## Access To Child Welfare Data Online

This document contains a small sample of the child welfare data available from the Child Welfare Court Improvement Project (CWCIP).

If you are looking for more views, disaggregations (ex. age at entry, filing type, disposition type, etc.) and sub-measures of any of the metrics in this packet, there are many more dynamic views and data available online.

For Unified Court System employees, to access the complete data set electronically from inside the court system, please go to the below website. It would be best to contact one of the individuals noted below to assist you with accessing this information online and understanding the data itself.

<https://sp2010-dev.courtnet.org/sites/cf/SitePages/Home.aspx>

Note: you will need to log onto the above site using your PC username and password.

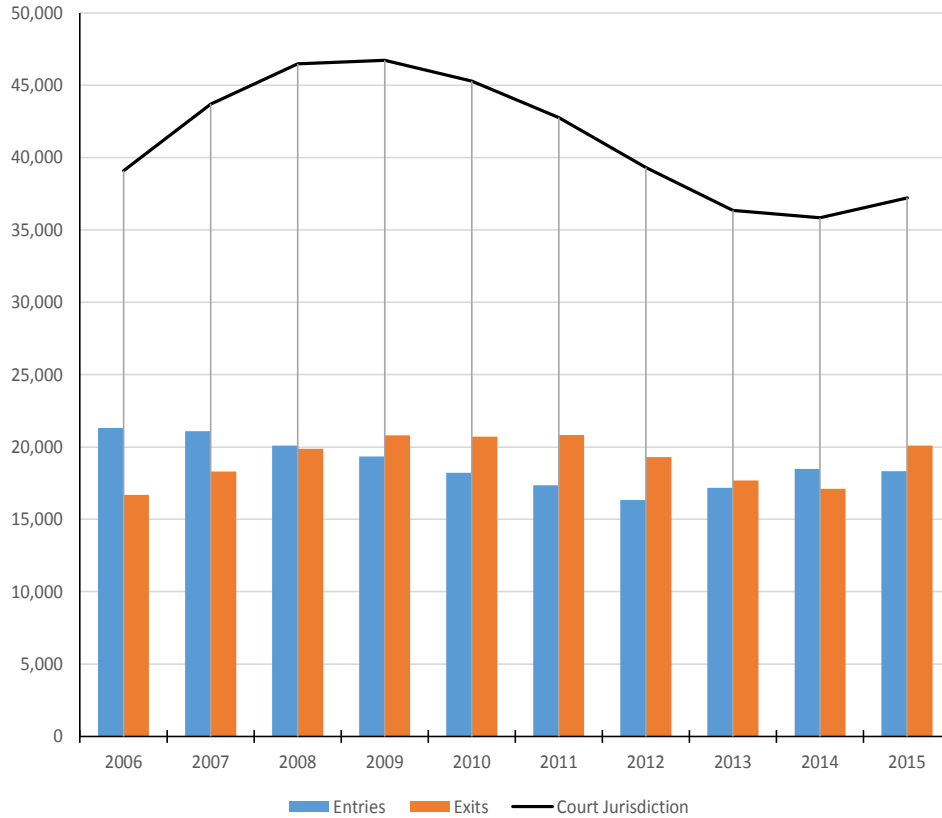
<b><u>Contact</u></b>	<b><u>County/Geographic Area</u></b>	<b><u>Phone</u></b>	<b><u>Email</u></b>
Christine Kiesel	Statewide	(315) 266-4254	<a href="mailto:ckiesel@nycourts.gov">ckiesel@nycourts.gov</a>
Darlene Ward	Orange, Statewide	(518) 238-4360	<a href="mailto:daward@nycourts.gov">daward@nycourts.gov</a>
Trista Borra	Nassau, Suffolk, Statewide	(516) 493-3943	<a href="mailto:tborra@nycourts.gov">tborra@nycourts.gov</a>
Jody Agostinelli	Chemung, Monroe, Onondaga	(917) 613-9347	<a href="mailto:jagostin@nycourts.gov">jagostin@nycourts.gov</a>
Jill Baszczyński	Albany, Dutchess, Schenectady	(845) 431-1869	<a href="mailto:jbaszczynski@nycourts.gov">jbaszczynski@nycourts.gov</a>
Jordan Conan	Queens	(718) 298-1324	<a href="mailto:jconan@nycourts.gov">jconan@nycourts.gov</a>
Mizrain K. Cortés	Kings	(347) 401-9909	<a href="mailto:mkcortes@nycourts.gov">mkcortes@nycourts.gov</a>
Denise Dizzine	Bronx	(718) 618-2175	<a href="mailto:ddizzine@nycourts.gov">ddizzine@nycourts.gov</a>
Aimee L. Neri	Chautauqua, Erie	(716) 845-1833	<a href="mailto:aneri@nycourts.gov">aneri@nycourts.gov</a>
Robert Rosenhaus	Westchester	(914) 824-5564	<a href="mailto:rrosenha@nycourts.gov">rrosenha@nycourts.gov</a>
Sue Shafer	Broome, Cortland, Oneida	(315) 266-4256	<a href="mailto:sshafer@nycourts.gov">sshafer@nycourts.gov</a>
Melissa Wade	New York, Richmond	(646) 386-5639	<a href="mailto:mwade@nycourts.gov">mwade@nycourts.gov</a>

## Index of Metrics

<b>Overview</b>	Pg. 1
<b>Time from Entry into Out-of-Home Care to Permanency Achieved</b>	Pg. 2-7
<b>Time from Abuse/Neglect Petition Filing to Issue Joined</b>	Pg. 8
<b>Time from Abuse/Neglect Petition Filing to Adjudication</b>	Pg. 9
<b>Time from Abuse/Neglect Petition Filing to Disposition</b>	Pg. 10
<b>Time from Entry into Out-Of-Home Care to Completion of Initial Permanency Hearing</b>	Pg. 11
<b>Time between Subsequent Permanency Hearings (non-freed child)</b>	Pg. 12
<b>Time to Initial Freed-Child Permanency Hearings</b>	Pg. 13
<b>Time between Subsequent Permanency Hearings (post-freed child)</b>	Pg. 14
<b>Time from Entry into Out-of-Home Care to Termination of Parental Rights Petition Filing</b>	Pg. 15
<b>Time from Termination of Parent Rights Petition Filing to Issue Joined</b>	Pg. 16
<b>Time from Termination of Parent Rights Petition Filing to Adjudication</b>	Pg. 17
<b>Time from TPR Petition Filing to Disposition</b>	Pg. 18
<b>Time from Entry into Out-of-Home Care to Child Freed</b>	Pg. 19
<b>Subsequent Abuse/Neglect Filings after the Initial Period of Court Jurisdiction Ends</b>	Pg. 20

**Overview**

Number of Children Entering & Exiting During the Year and Number under Court Jurisdiction on the First Day of the Year by Calendar Year: First Original Petitions, Abuse/Neglect/Voluntary Filings, 2006-2015, New York State

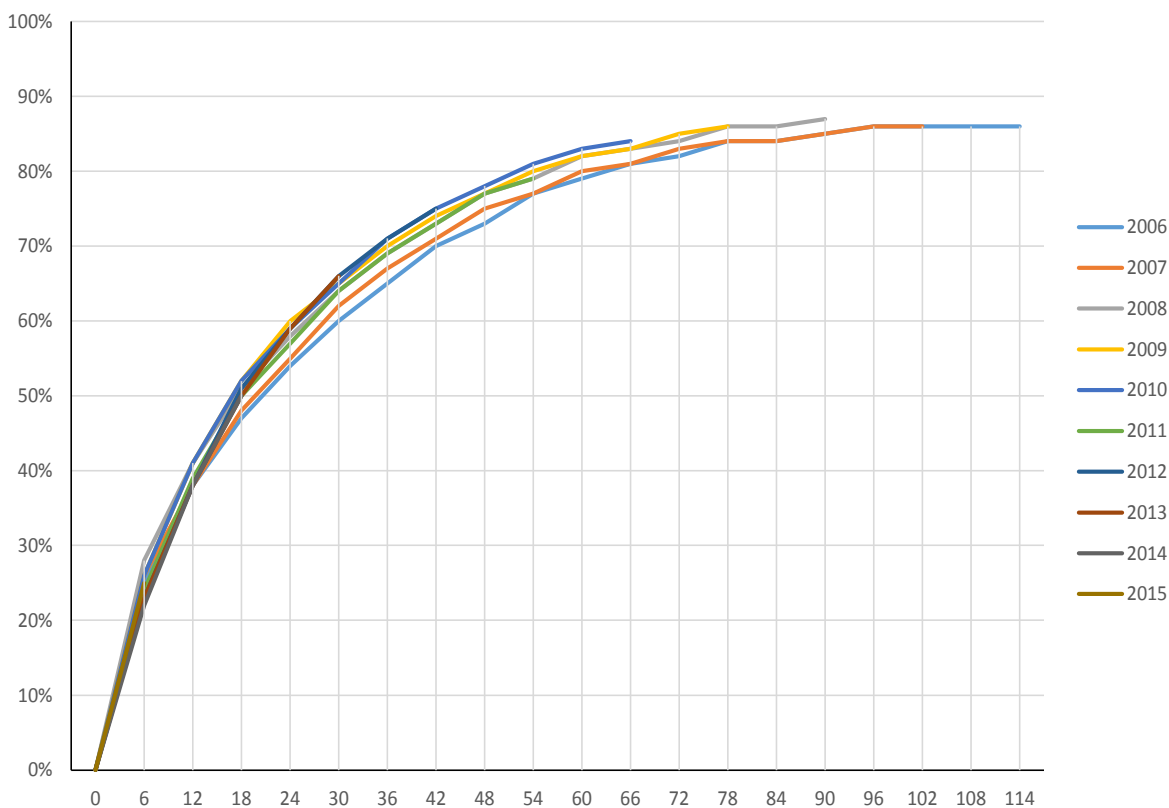


Cohort	Year										
	2006	2007	2008	2009	2010	2011	2012	2013	2014	2015	
Entries	21,308	21,073	20,111	19,350	18,213	17,366	16,338	17,175	18,492	18,327	
Exits	16,694	18,300	19,861	20,806	20,721	20,822	19,297	17,693	17,101	20,083	
Court Jurisdiction	39,092	43,706	46,480	46,732	45,278	42,765	39,310	36,354	35,831	37,223	

### Time from Entry into Out-of-Home Care to Permanency Achieved

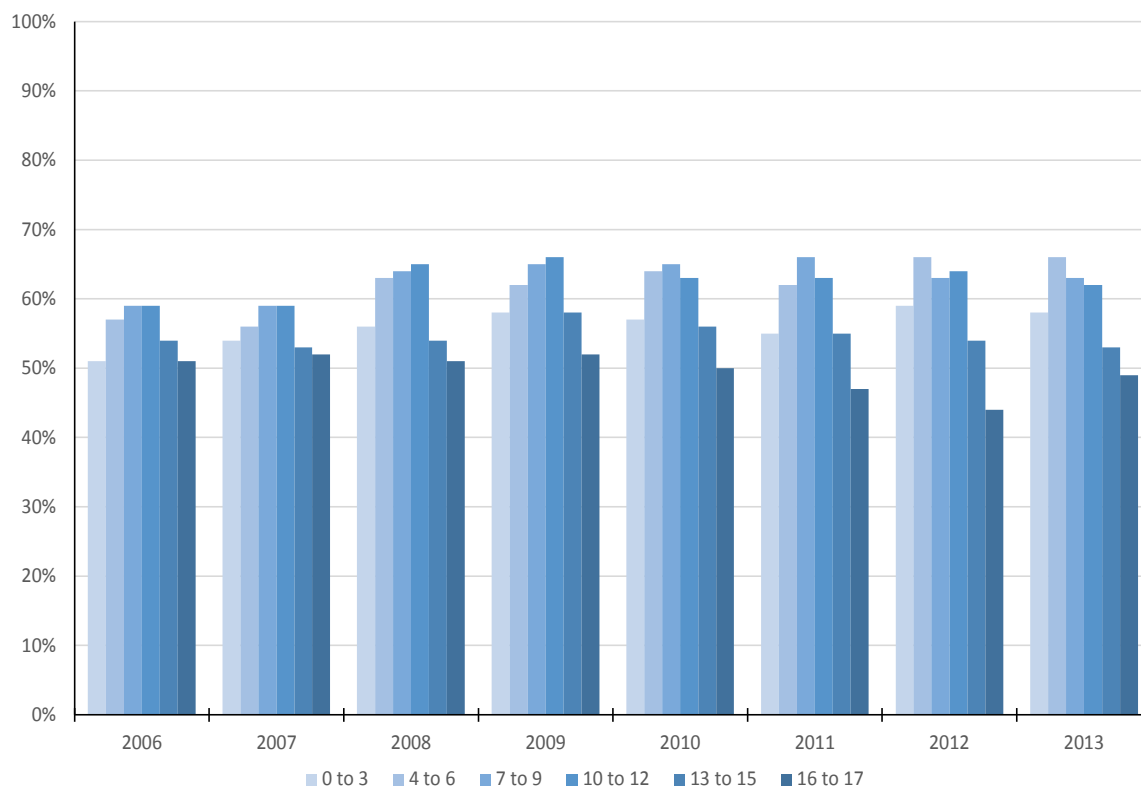
Among children who enter out-of-home care for the first time in a given period for reasons of abuse/neglect or voluntary placement, the time from entering out-of-home care to permanency achieved by reunification, permanent custody or guardianship with a fit and willing relative or suitable person or adoption.

Proportion of Children Achieving Permanency at 6 Month Intervals from Entering Out-of-Home Care by Entry Cohort Year(s): New York State, 2006-2015



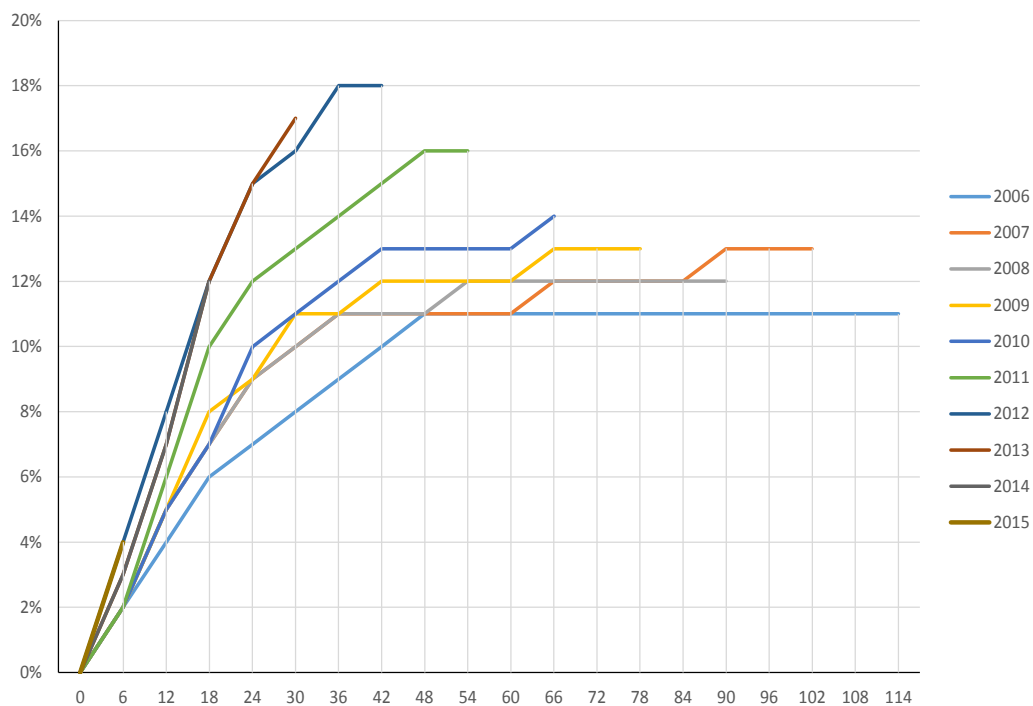
Entry Cohort Year	N=	Months																			
		0	6	12	18	24	30	36	42	48	54	60	66	72	78	84	90	96	102	108	114
2006	12169	0%	25%	38%	47%	54%	60%	65%	70%	73%	77%	79%	81%	82%	84%	84%	85%	86%	86%	86%	86%
2007	11055	0%	26%	38%	48%	55%	62%	67%	71%	75%	77%	80%	81%	83%	84%	84%	85%	86%	86%		
2008	10686	0%	28%	41%	51%	58%	64%	69%	73%	77%	79%	82%	83%	84%	86%	86%	87%				
2009	10547	0%	26%	41%	52%	60%	65%	70%	74%	77%	80%	82%	83%	85%	86%						
2010	10049	0%	26%	41%	52%	59%	65%	71%	75%	78%	81%	83%	84%								
2011	9354	0%	24%	39%	50%	57%	64%	69%	73%	77%	79%										
2012	8708	0%	23%	38%	51%	59%	66%	71%	75%												
2013	8606	0%	23%	38%	50%	59%	66%														
2014	9036	0%	22%	38%	50%																
2015	9014	0%	25%																		

Proportion of Children Achieving Permanency at 24 Months from Entering Out-of-Home Care by Age at Entry: New York State, 2006-2013



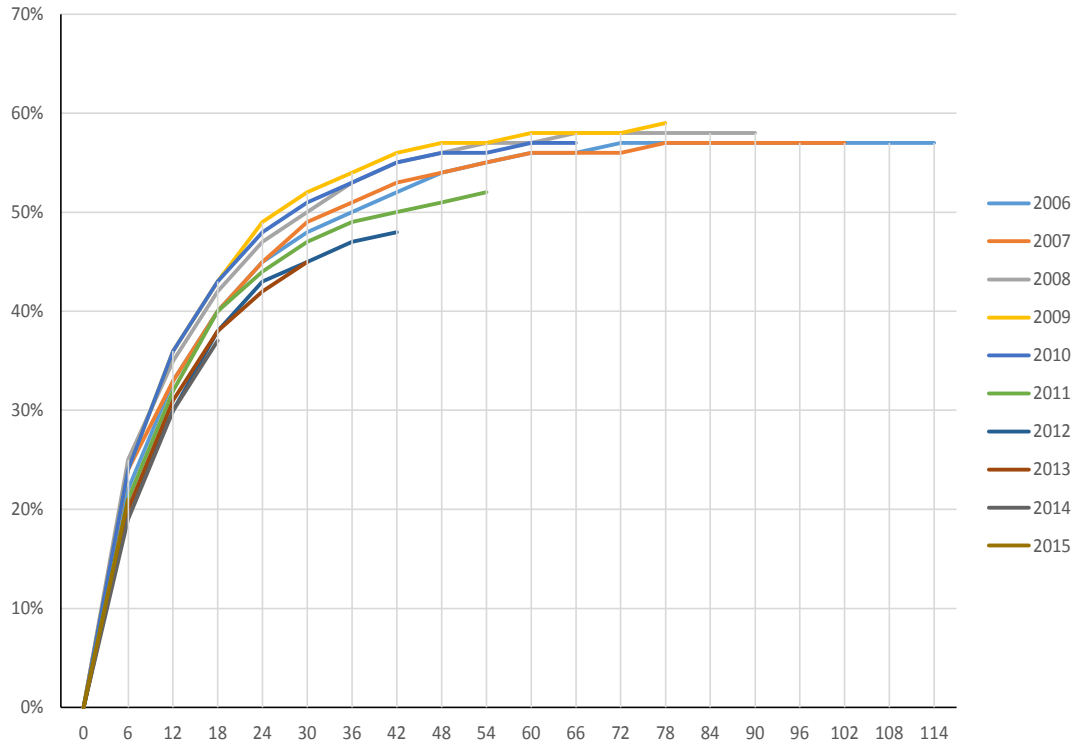
Age at Entry	Entry Cohort Year	N=	Months			
			6	12	18	24
All Ages	2006	12169	25%	38%	47%	54%
	2007	11055	26%	38%	48%	55%
	2008	10686	28%	41%	51%	58%
	2009	10547	26%	41%	52%	60%
	2010	10049	26%	41%	52%	59%
	2011	9354	24%	39%	50%	57%
	2012	8708	23%	38%	51%	59%
	2013	8606	23%	38%	50%	59%

Proportion of Children Achieving Permanency through Custody/Guardianship at 6 Month Intervals from Entering Out-of-Home Care by Entry Cohort Year(s): New York State, 2006-2015



Entry Cohort Year	N=	Months																			
		0	6	12	18	24	30	36	42	48	54	60	66	72	78	84	90	96	102	108	114
2006	12169	0%	2%	4%	6%	7%	8%	9%	10%	11%	11%	11%	11%	11%	11%	11%	11%	11%	11%	11%	11%
2007	11055	0%	2%	5%	7%	9%	10%	11%	11%	11%	11%	11%	12%	12%	12%	12%	13%	13%	13%		
2008	10686	0%	2%	5%	7%	9%	10%	11%	11%	11%	12%	12%	12%	12%	12%	12%	12%				
2009	10547	0%	2%	5%	8%	9%	11%	11%	12%	12%	12%	12%	13%	13%	13%						
2010	10049	0%	2%	5%	7%	10%	11%	12%	13%	13%	13%	14%									
2011	9354	0%	2%	6%	10%	12%	13%	14%	15%	16%	16%										
2012	8708	0%	4%	8%	12%	15%	16%	18%	18%												
2013	8606	0%	3%	7%	12%	15%	17%														
2014	9036	0%	3%	7%	12%																
2015	9014	0%	4%																		

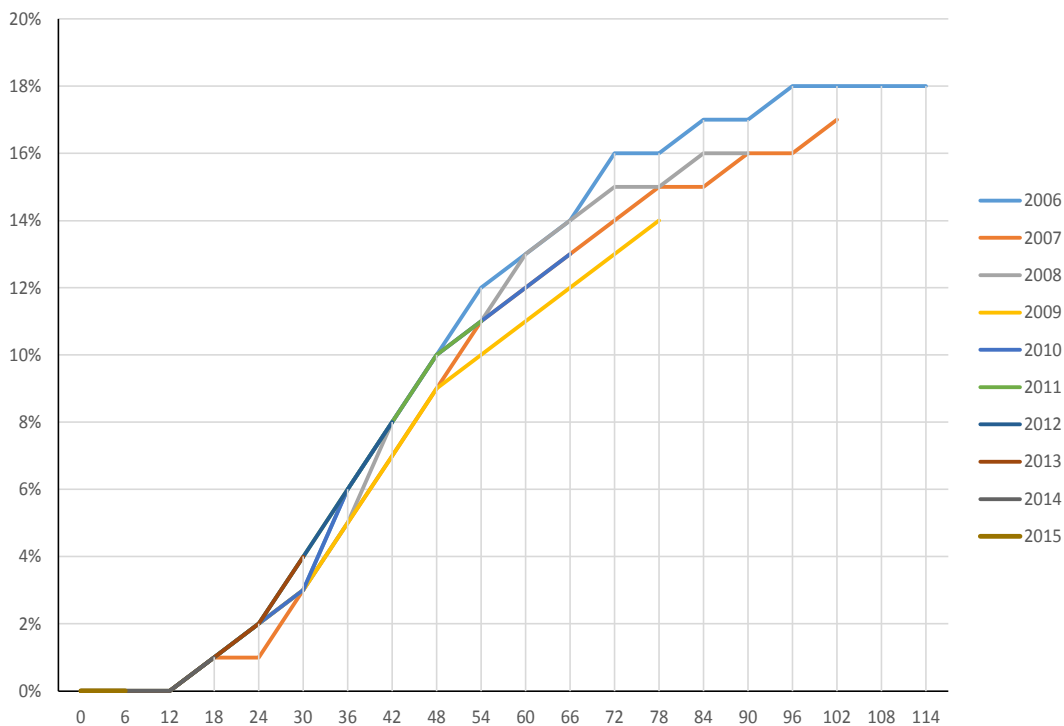
Proportion of Children Achieving Permanency through Reunification at 6 Month Intervals from Entering Out-of-Home Care by Entry Cohort Year(s): New York State, 2006-2015



Entry Cohort Year	N=	Months																			
		0	6	12	18	24	30	36	42	48	54	60	66	72	78	84	90	96	102	108	114
2006	12169	0%	22%	33%	40%	45%	48%	50%	52%	54%	55%	56%	56%	57%	57%	57%	57%	57%	57%	57%	57%
2007	11055	0%	24%	33%	40%	45%	49%	51%	53%	54%	55%	56%	56%	56%	57%	57%	57%	57%	57%	57%	57%
2008	10686	0%	25%	35%	42%	47%	50%	53%	55%	56%	57%	57%	58%	58%	58%	58%	58%	58%	58%	58%	58%
2009	10547	0%	24%	36%	43%	49%	52%	54%	56%	57%	57%	58%	58%	58%	58%	59%					
2010	10049	0%	24%	36%	43%	48%	51%	53%	55%	56%	56%	57%	57%								
2011	9354	0%	21%	32%	40%	44%	47%	49%	50%	51%	52%										
2012	8708	0%	20%	30%	38%	43%	45%	47%	48%												
2013	8606	0%	20%	31%	38%	42%	45%														
2014	9036	0%	19%	30%	37%																
2015	9014	0%	21%																		

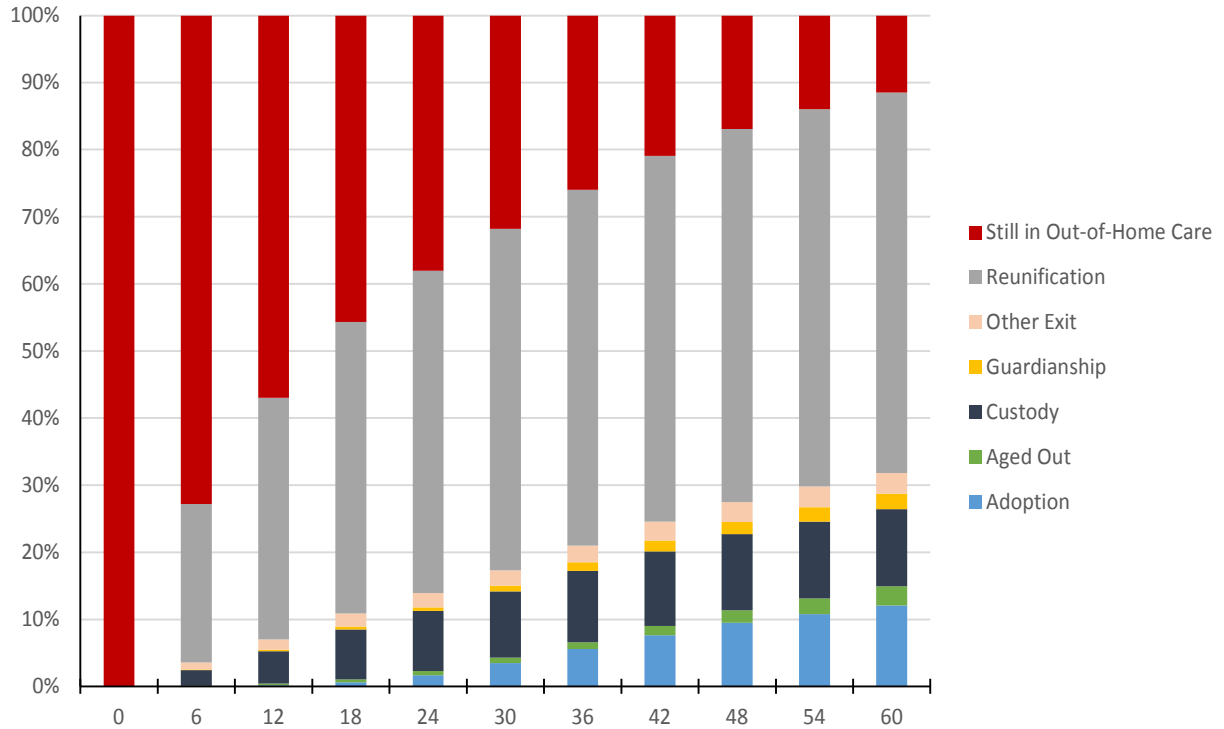


### Proportion of Children Achieving Permanency through Adoption at 6 Month Intervals from Entering Out-of-Home Care by Entry Cohort Year(s): New York State, 2006-2015



Entry Cohort Year	N=	Months																			
		0	6	12	18	24	30	36	42	48	54	60	66	72	78	84	90	96	102	108	114
2006	12169	0%	0%	0%	1%	2%	3%	6%	8%	10%	12%	13%	14%	16%	16%	17%	17%	18%	18%	18%	18%
2007	11055	0%	0%	0%	1%	1%	3%	5%	7%	9%	11%	12%	13%	14%	15%	15%	16%	16%	17%		
2008	10686	0%	0%	0%	1%	2%	3%	5%	8%	10%	11%	13%	14%	15%	15%	16%	16%				
2009	10547	0%	0%	0%	1%	2%	3%	5%	7%	9%	10%	11%	12%	13%	14%						
2010	10049	0%	0%	0%	1%	2%	3%	6%	8%	10%	11%	12%	13%								
2011	9354	0%	0%	0%	1%	2%	4%	6%	8%	10%	11%										
2012	8708	0%	0%	0%	1%	2%	4%	6%	8%												
2013	8606	0%	0%	0%	1%	2%	4%														
2014	9036	0%	0%	0%	1%																
2015	9014	0%	0%																		

Proportion of Children Still in Care and Exiting by Exit Type at 6 Month Intervals from the Date of Entering Out-of-Home Care: New York State, 2010 Entry Cohort Year

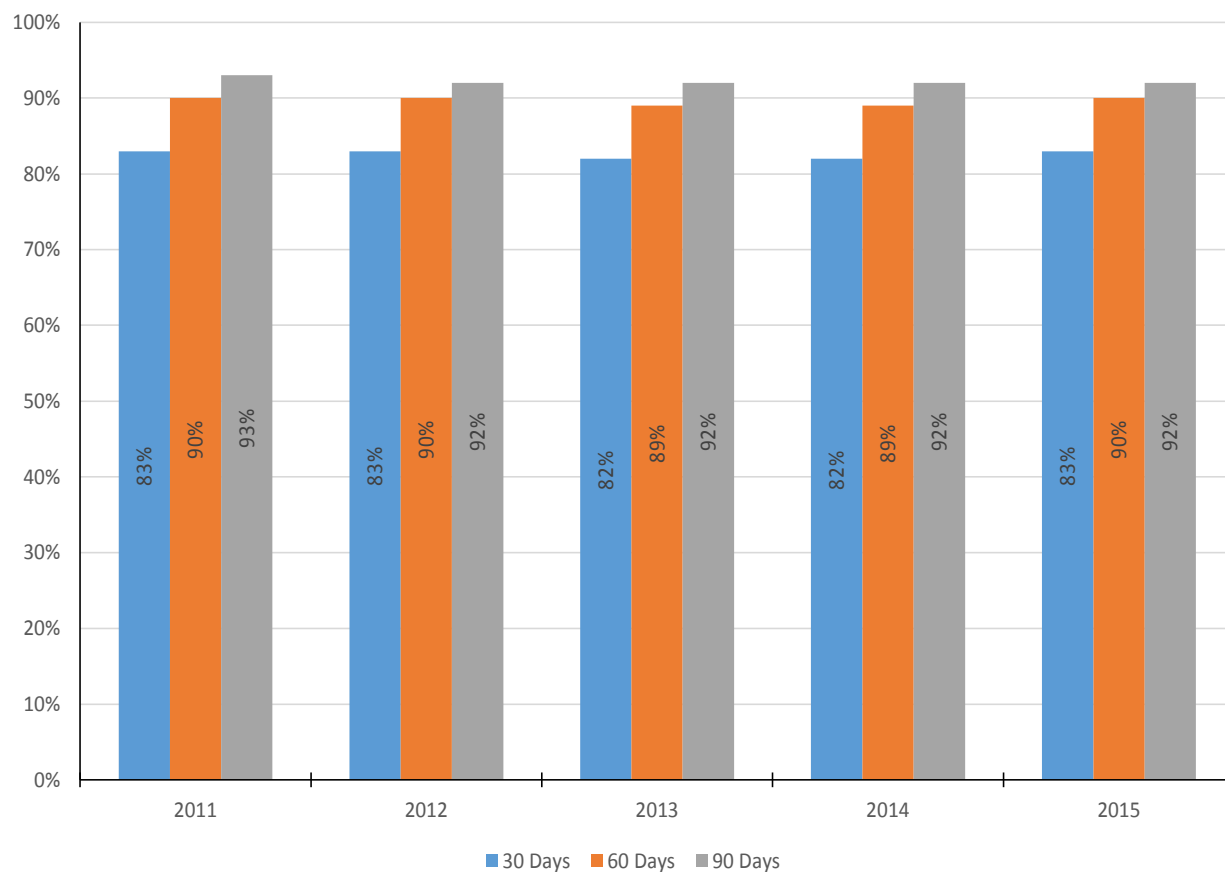


Exit Type	N = 10049										
	Months										
	6	12	18	24	30	36	42	48	54	60	
Adoption	0%	0%	1%	2%	3%	6%	8%	10%	11%	12%	
Aged Out	0%	0%	0%	1%	1%	1%	1%	2%	2%	3%	
Custody	2%	5%	7%	9%	10%	11%	11%	11%	11%	11%	
Guardianship	0%	0%	0%	1%	1%	1%	2%	2%	2%	2%	
Other Exit	1%	2%	2%	2%	2%	2%	3%	3%	3%	3%	
Reunification	24%	36%	43%	48%	51%	53%	55%	56%	56%	57%	
Still in Out-of-Home Care	73%	57%	46%	38%	32%	26%	21%	17%	14%	12%	

## Time from Abuse/Neglect Petition Filing to Issue Joined

Among children for whom an original abuse/neglect petition is filed during a given period, the time from petition filing to issue is joined.

Proportion of Children Whose Case has Reached Issue Joined within 30/60/90 Days from Petition Filing Date by Entry Cohort Year: New York State, 2011-2015 Entry Cohort Years

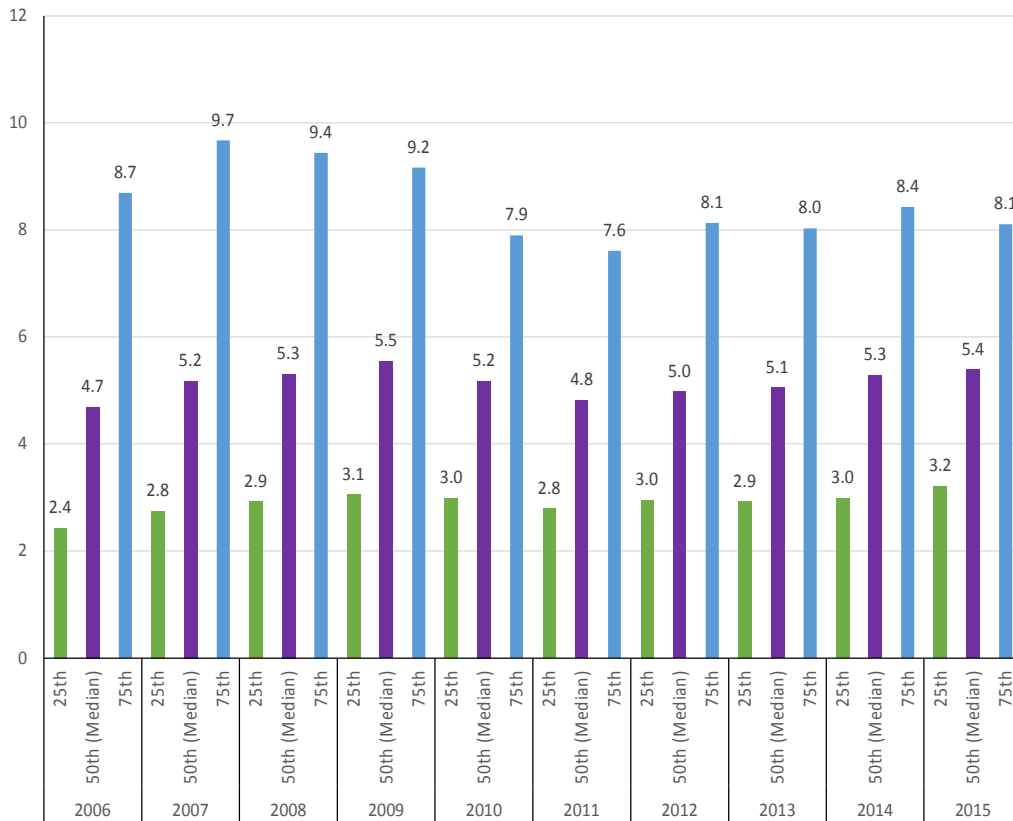


Entry Cohort Year	N=	Days		
		30	60	90
2011	16886	83%	90%	93%
2012	15930	83%	90%	92%
2013	16764	82%	89%	92%
2014	18138	82%	89%	92%
2015	18017	83%	90%	92%

### Time from Abuse/Neglect Petition Filing to Adjudication

Among children for whom an original abuse/neglect petition is filed during a given period, the time from petition filing to adjudication.

Quartile Time from Abuse/Neglect Petition Filing to Adjudication for Children with a First, Original Abuse/Neglect Petition Filing: New York State, 2006-2015 Entry Cohort Years

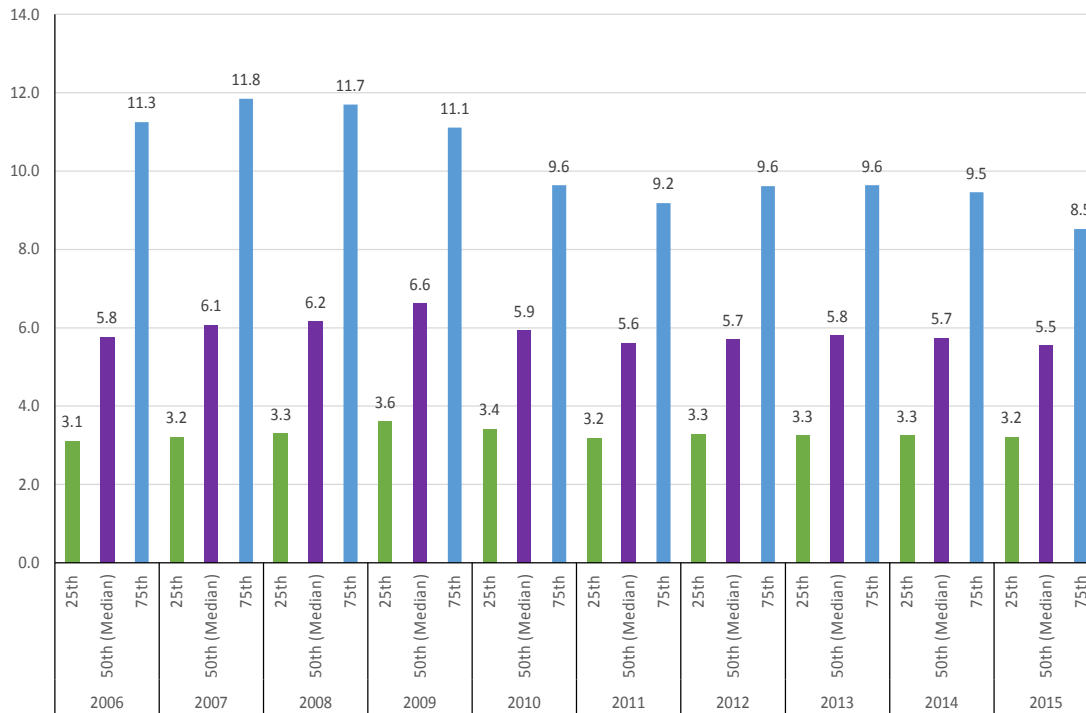


Entry Cohort Year	N=	Quartile		
		25th	50th (Median)	75th
2006	20618	2.4	4.7	8.7
2007	20516	2.8	5.2	9.7
2008	19578	2.9	5.3	9.4
2009	18928	3.1	5.5	9.2
2010	17758	3.0	5.2	7.9
2011	16886	2.8	4.8	7.6
2012	15930	3.0	5.0	8.1
2013	16764	2.9	5.1	8.0
2014	18138	3.0	5.3	8.4
2015	18017	3.2	5.4	8.1

## Time from Abuse/Neglect Petition Filing to Disposition

*Among children for whom an original abuse/neglect petition is filed during a given period and the court makes a finding of abuse/neglect or the respondent admits or consents to the jurisdiction of the court, the time from petition filing to the entry of a dispositional order.*

Quartile Time from Abuse/Neglect Petition Filing to Disposition for Children with a First, Original Abuse/Neglect Petition Filing: New York State, 2006-2015 Entry Cohort Years

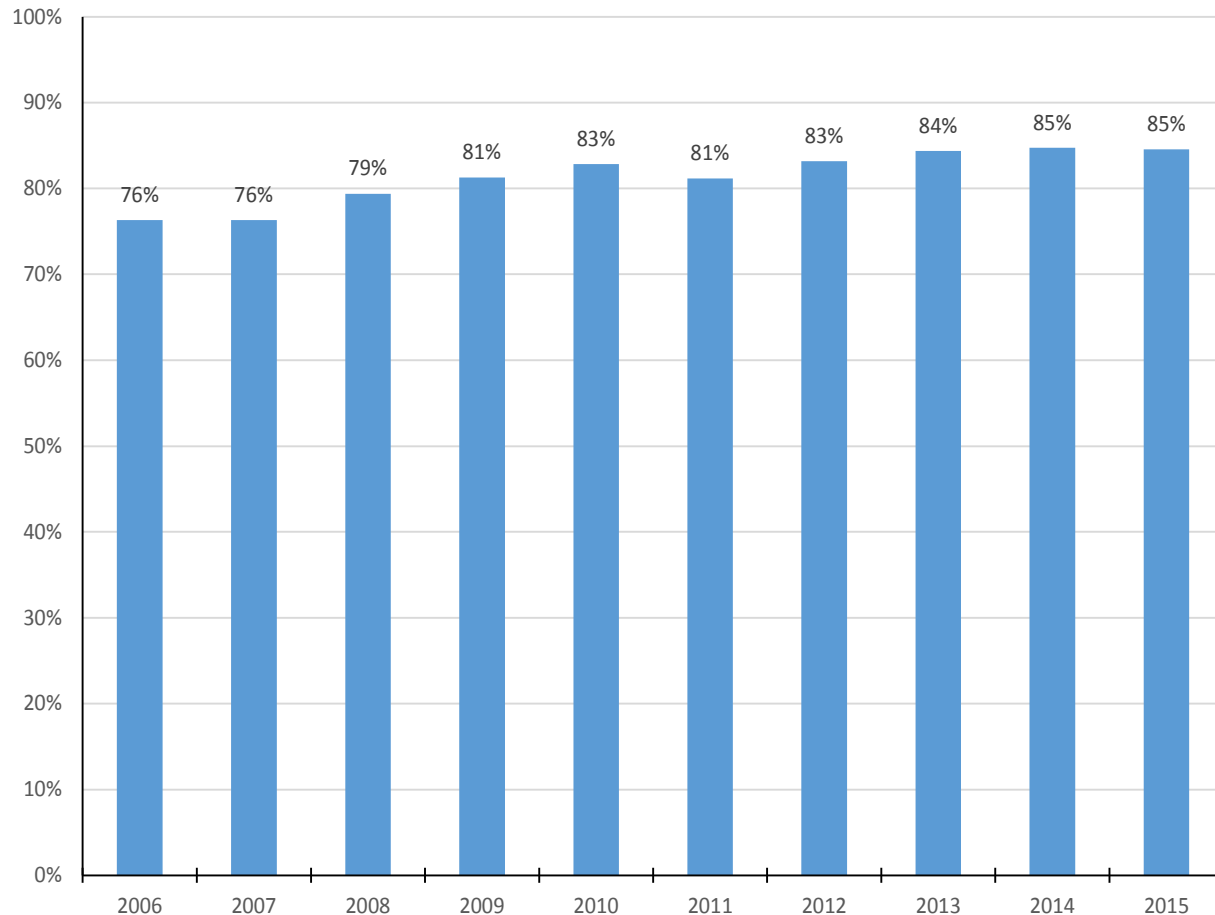


Entry Cohort Year	N=	Quartile		
		25th	50th (Median)	75th
2006	14726	3.1	5.8	11.3
2007	14470	3.2	6.1	11.8
2008	13742	3.3	6.2	11.7
2009	13175	3.6	6.6	11.1
2010	12503	3.4	5.9	9.6
2011	11822	3.2	5.6	9.2
2012	10700	3.3	5.7	9.6
2013	10792	3.3	5.8	9.6
2014	11516	3.3	5.7	9.5
2015	10400	3.2	5.5	8.5

## Time from Entry into Out-Of-Home Care to Completion of Initial Permanency Hearing

Among children who enter out-of-home care for the first time in a given period for reasons of abuse/neglect or voluntary placement, the time from entering out-of-home care to the completion of the initial permanency hearing.

Proportion of Initial Permanency Hearings Completed within 9 Months from the Date of Entry into Out-of-Home Care:  
New York State, 2006-2015 Entry Cohort Years

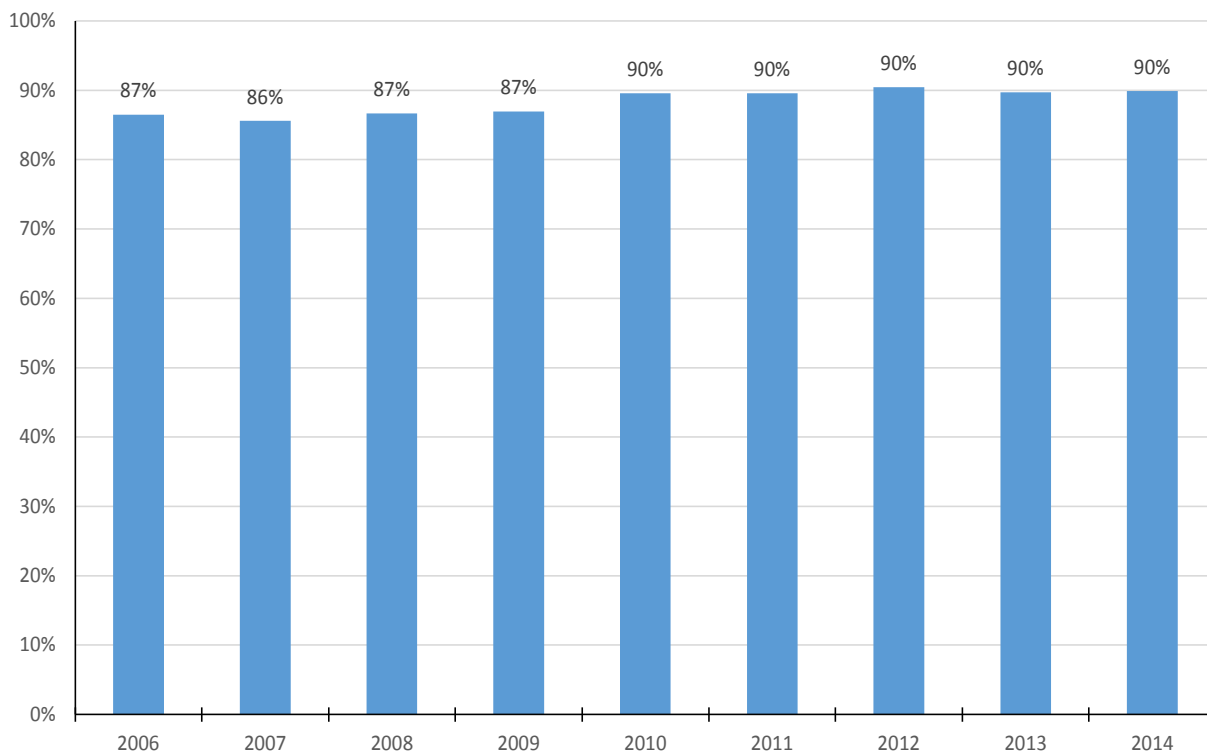


Entry Cohort Year	N=	Completed @ 9 Months	
		#	%
2006	7995	6102	76%
2007	7105	5423	76%
2008	6753	5360	79%
2009	6634	5392	81%
2010	6329	5242	83%
2011	6189	5022	81%
2012	5770	4798	83%
2013	5677	4788	84%
2014	6113	5179	85%
2015	5791	4895	85%

## Time between Subsequent Permanency Hearings

*Among children who enter out-of-home care for the first time in a given period for reasons of abuse/neglect or voluntary placement and prior to a child being freed for adoption, the time from a completed permanency hearing to the next, subsequent completed permanency hearing.*

Cumulative Percentage of 1st Subsequent, Non Freed-Child Permanency Hearings Completed within 7 Months from the Date of the Prior Completed Permanency Hearing for Hearings Completed by Entry Cohort Year, as of June 30th, 2016: New York State, 2006-2014 Entry Cohort Years

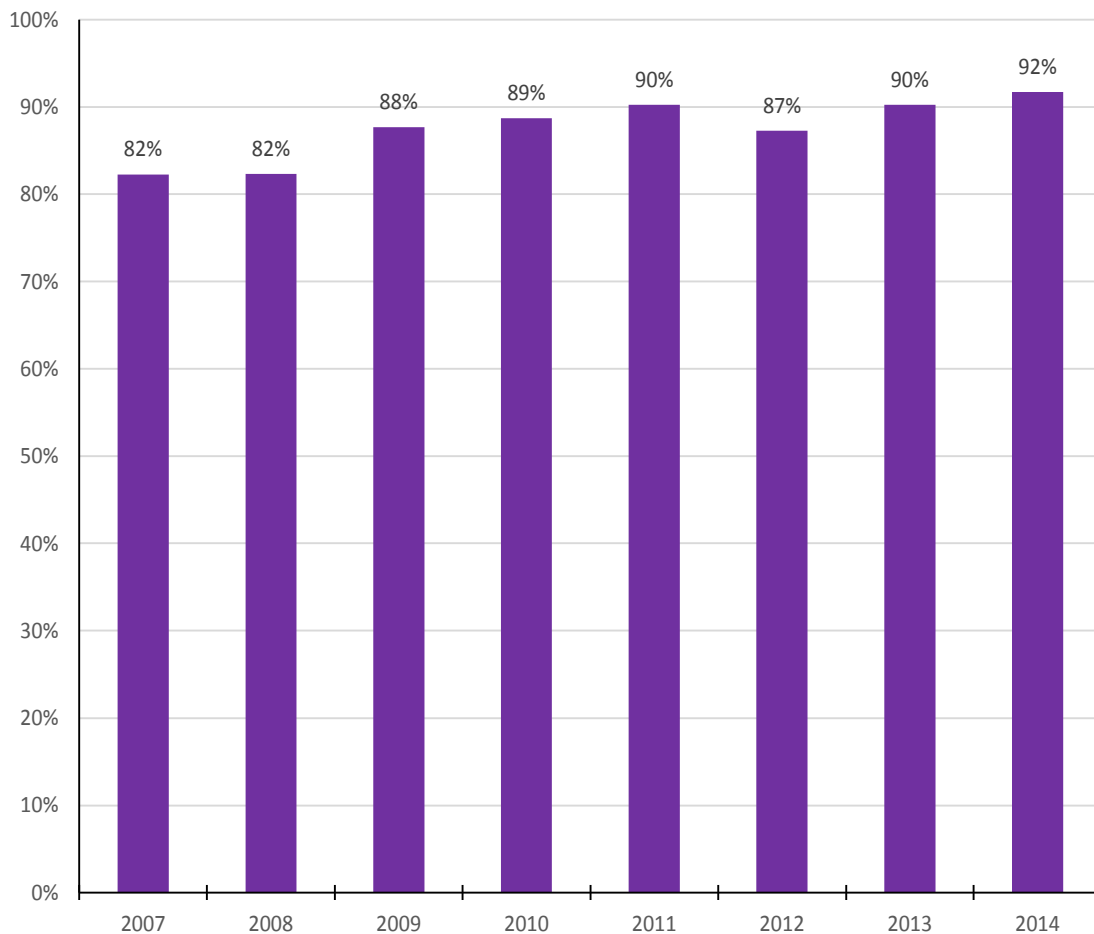


Entry Cohort Year	N=	Completed @ 7 Months	
		#	%
2006	5919	5,120	87%
2007	5245	4,489	86%
2008	4936	4,279	87%
2009	4788	4,162	87%
2010	4595	4,115	90%
2011	4394	3,935	90%
2012	4041	3,655	90%
2013	3998	3,587	90%
2014	4210	3,785	90%

## Time to Initial Freed-Child Permanency Hearings

*Among children who enter out-of-home care for the first time in a given period for reasons of abuse/neglect or voluntary placement and are subsequently freed, the time from the freed date to the initial completed freed child permanency hearing.*

Cumulative Percentage of Initial Freed-Child Permanency Hearings Completed within 60 Days from the Child Freed Date by Entry Cohort Year, as of June 30th, 2016: New York State, 2007-2014 Entry Cohort Years



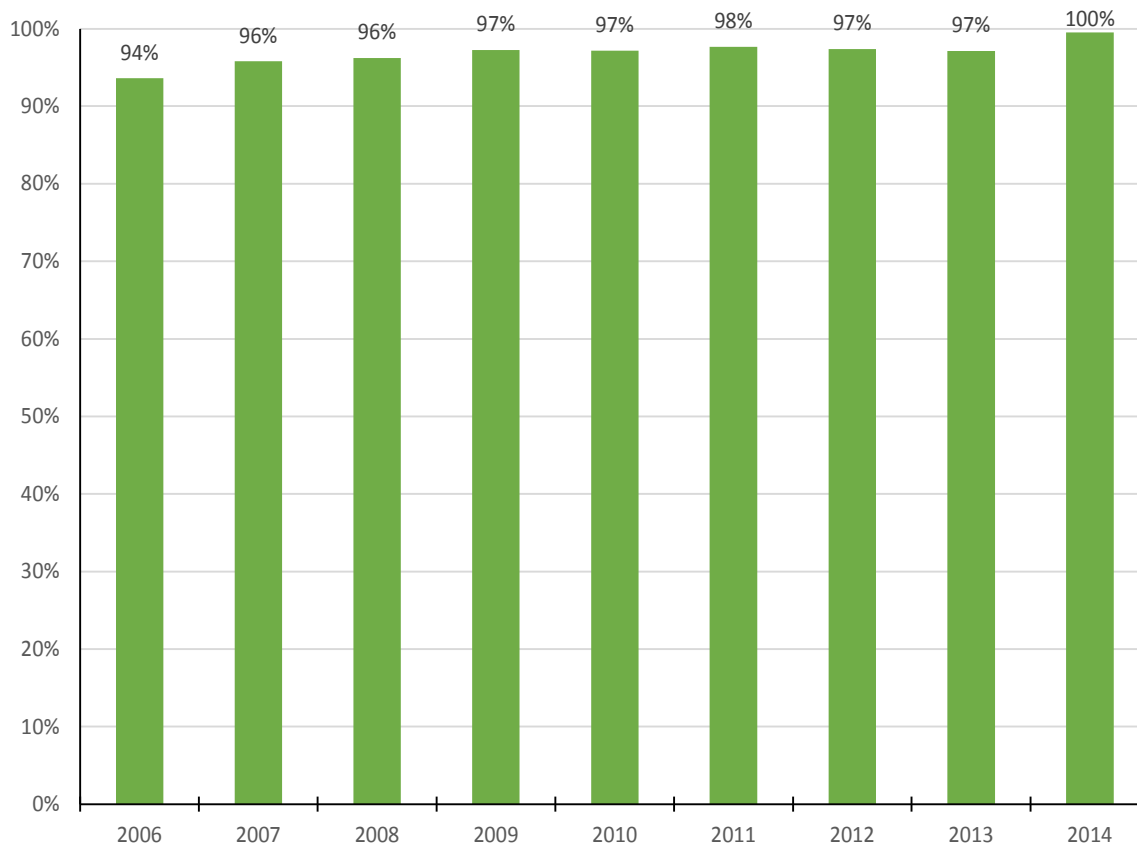
Entry Cohort Year	N=	Completed @ 60 Days	
		#	%
2007	1137	935	82%
2008	1340	1103	82%
2009	1404	1231	88%
2010	1418	1258	89%
2011	1446	1305	90%
2012	1131	987	87%
2013	1065	961	90%
2014	639	586	92%



## Time between Subsequent Permanency Hearings

*Among children who enter out-of-home care for the first time in a given period for reasons of abuse/neglect or voluntary placement and following a child being freed for adoption, the time from a completed permanency hearing to the next, subsequent completed permanency hearing.*

Cumulative Percentage of 1st Subsequent, Post Freed-Child Permanency Hearings Completed within 7 Months from the Date of the Prior Completed Permanency Hearing for Hearings Completed by Entry Cohort Year, as of June 30th, 2016: New York State, 2006-2014 Entry Cohort Years

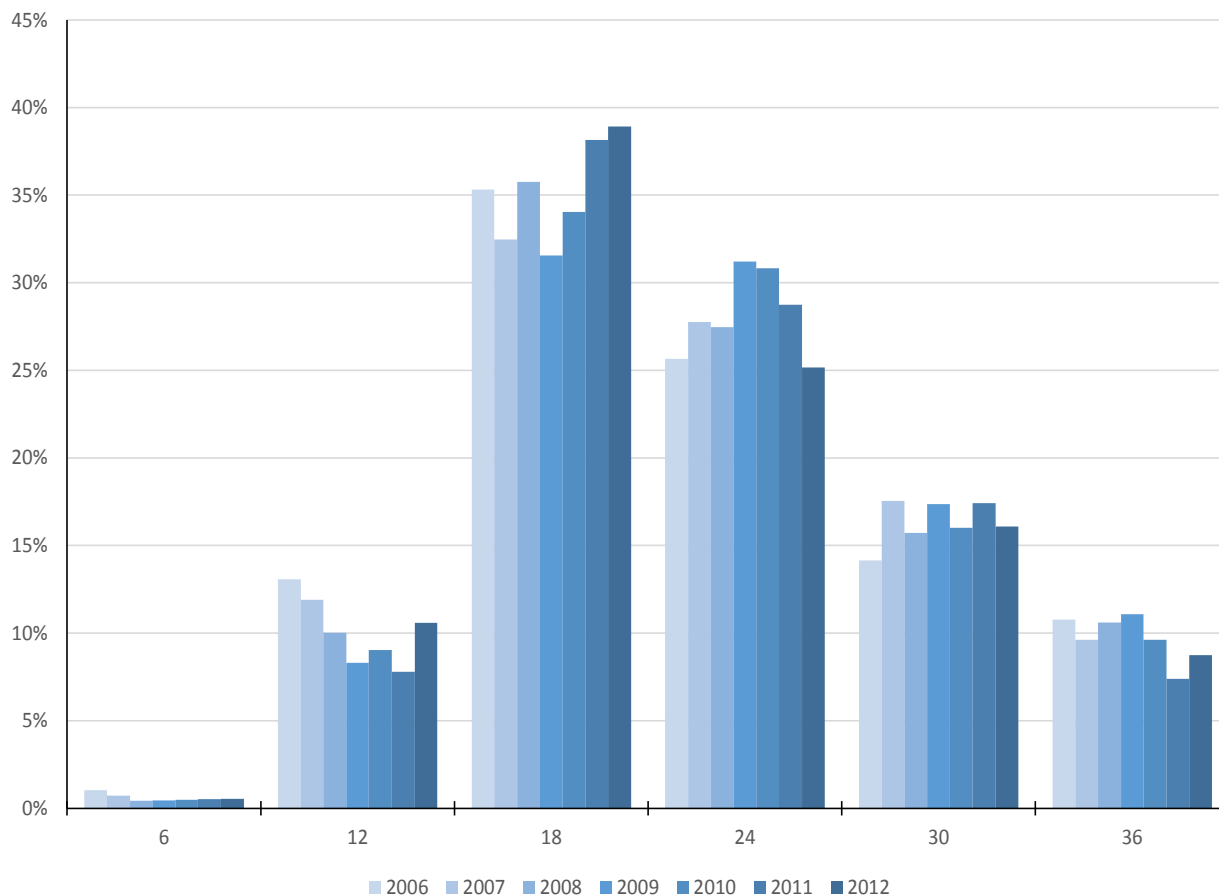


Entry Cohort Year	N=	Completed @ 7 Months	
		#	%
2006	3569	3,342	94%
2007	3228	3,093	96%
2008	3517	3,384	96%
2009	3308	3,217	97%
2010	2822	2,742	97%
2011	2905	2,838	98%
2012	1839	1,791	97%
2013	1299	1,262	97%
2014	416	414	100%

### Time from Entry into Out-of-Home Care to Termination of Parental Rights Petition Filing

Among children for whom a first TPR petition has been filed within a given period, the time from entering out-of-home care to the time of the TPR filing.

Distributive Percentage of Children for whom a First TPR Petition was Filed within 36 Months from Entering Out-of-Home Care by Time to Filing at 6 Month Intervals: New York State, 2006-2012 Entry Cohort Years

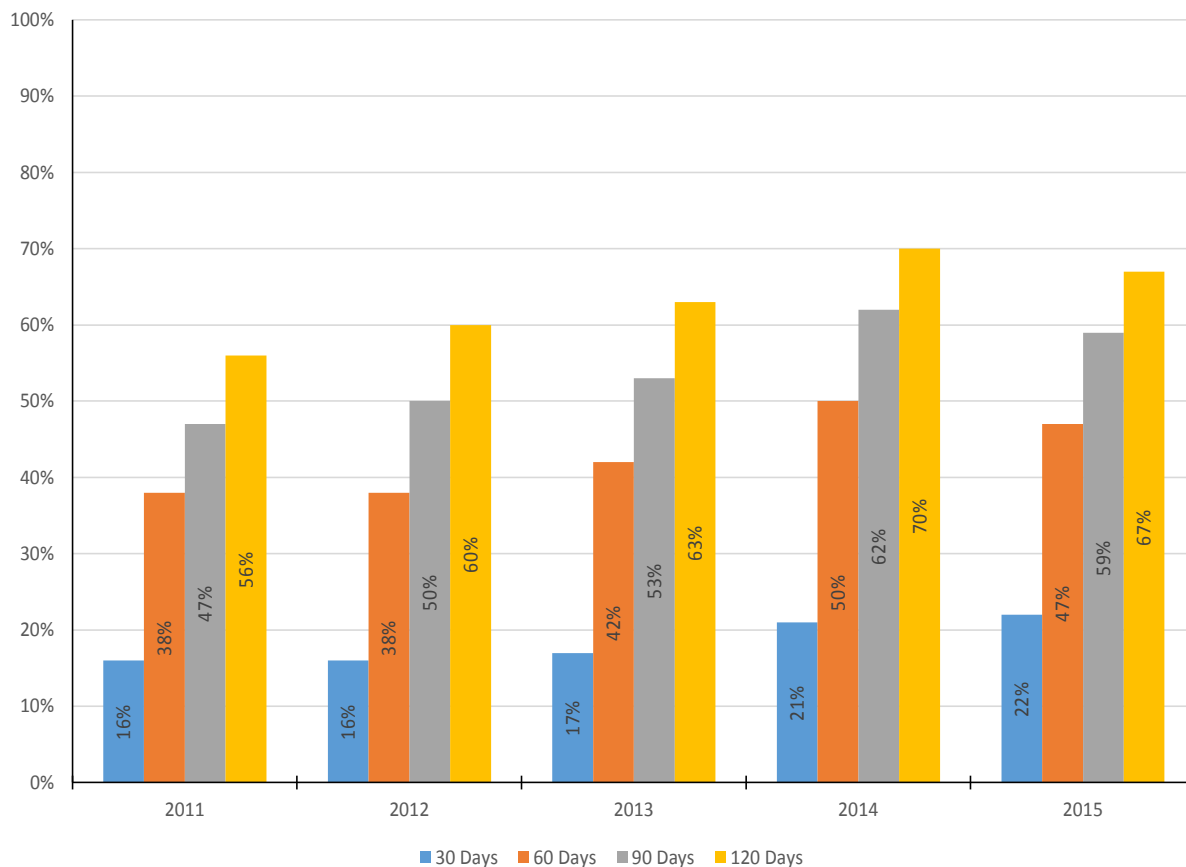


Entry Cohort Year	N=	Cumulative % of TPRs Filed at X Months					
		6	12	18	24	30	36
2006	2347	1.0%	14.1%	49.4%	75.1%	89.2%	100.0%
2007	1956	0.7%	12.6%	45.1%	72.9%	90.4%	100.0%
2008	1876	0.4%	10.4%	46.2%	73.7%	89.4%	100.0%
2009	1768	0.5%	8.8%	40.3%	71.5%	88.9%	100.0%
2010	1674	0.5%	9.5%	43.5%	74.4%	90.4%	100.0%
2011	1746	0.5%	8.3%	46.4%	75.2%	92.6%	100.0%
2012	1511	0.5%	11.1%	50.0%	75.2%	91.3%	100.0%

### Time from Termination of Parent Rights Petition Filing to Issue Joined

Among children for whom an initial TPR petition is filed during a given period, the time from petition filing to issue is joined.

Proportion of Children Whose Case has Reached Issue Joined within 30/60/90/120 Days from TPR Petition Filing Date by Year: New York State, 2011-2015 Entry Cohort Years

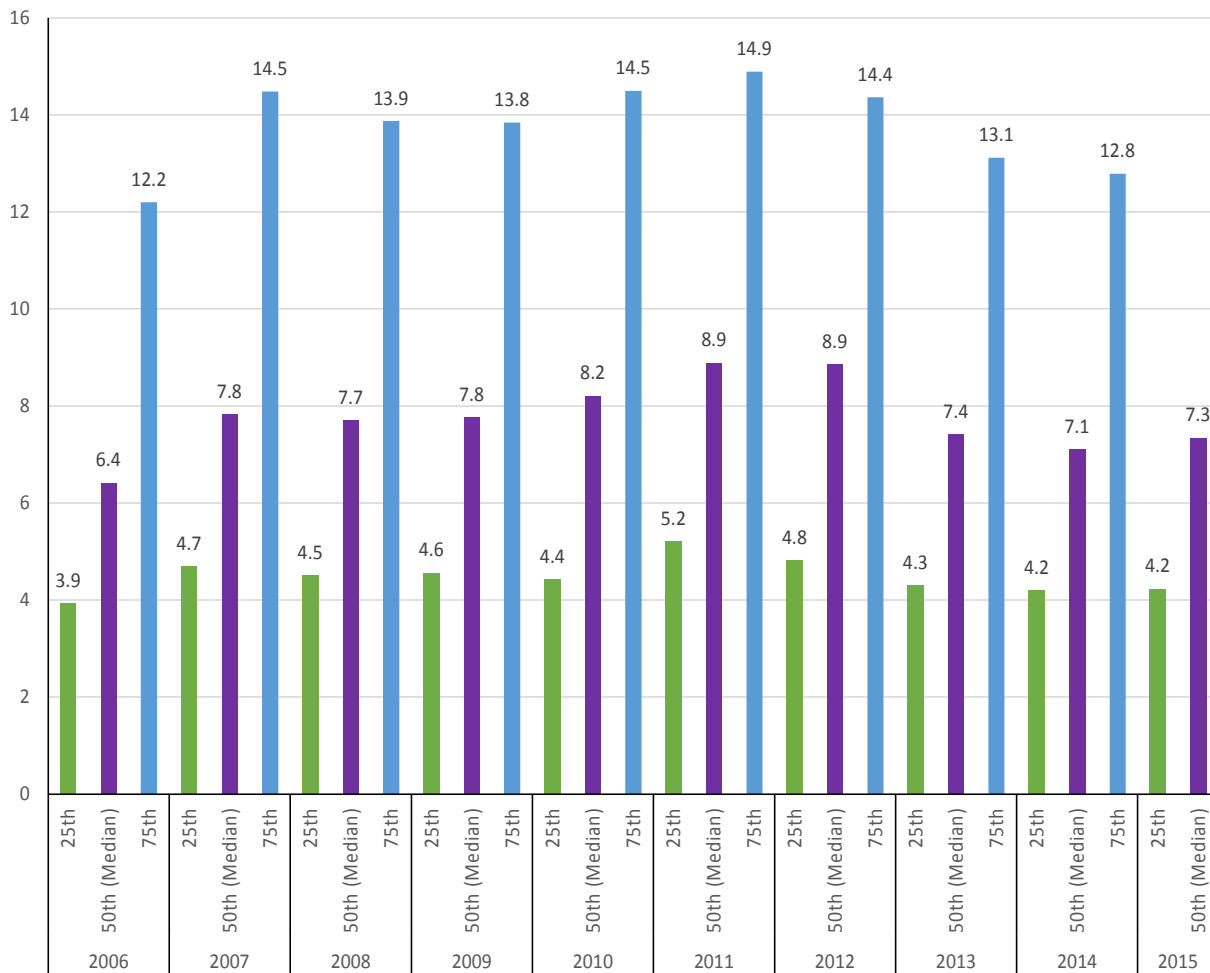


TPR Filing Entry Cohort	N=	% Complete at X Days			
		30	60	90	120
2011	2276	16%	38%	47%	56%
2012	2545	16%	38%	50%	60%
2013	2294	17%	42%	53%	63%
2014	2082	21%	50%	62%	70%
2015	2060	22%	47%	59%	67%

### Time from Termination of Parent Rights Petition Filing to Adjudication

Among children for whom a TPR petition is filed in a given period, the time from petition filing to adjudication of the TPR.

Quartile Time from TPR Filing to Adjudication for Children with an Initial TPR Petition Filing: New York State, 2006-2015 TPR Filing Entry Cohort Years

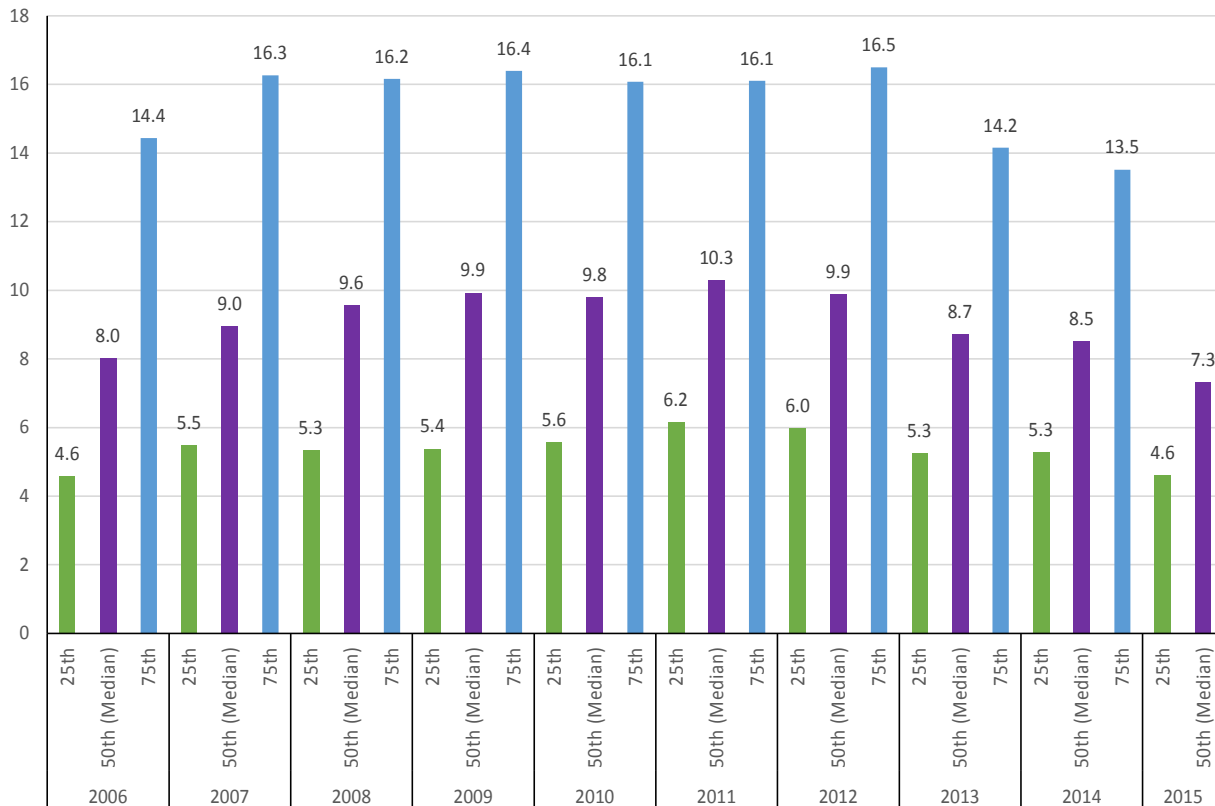


TPR Filing Entry Cohort	N=	Quartile		
		25th	50th (Median)	75th
2006	2476	3.9	6.4	12.2
2007	2692	4.7	7.8	14.5
2008	2432	4.5	7.7	13.9
2009	2694	4.6	7.8	13.8
2010	2325	4.4	8.2	14.5
2011	2276	5.2	8.9	14.9
2012	2545	4.8	8.9	14.4
2013	2294	4.3	7.4	13.1
2014	2082	4.2	7.1	12.8
2015	2060	4.2	7.3	

### Time from TPR Petition Filing to Disposition

Among children for whom a TPR petition is filed in a given period and one or more grounds for termination is established, the time from TPR petition filing to disposition.

Quartile Time from TPR Filing to Disposition for Children with an Initial TPR Petition Filing: New York State, 2006-2015  
TPR Filing Entry Cohort Years



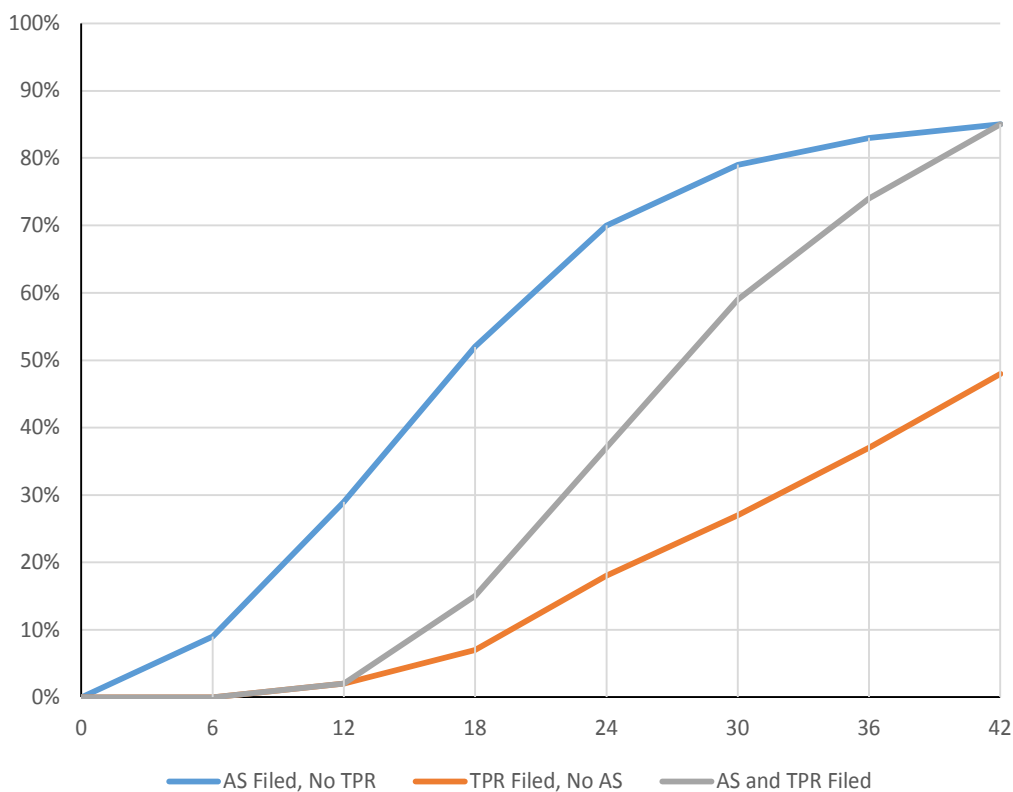
TPR Filing Entry Cohort	N=	Quartile		
		25th	50th (Median)	75th
2006	1713	4.6	8.0	14.4
2007	1819	5.5	9.0	16.3
2008	1562	5.3	9.6	16.2
2009	1762	5.4	9.9	16.4
2010	1490	5.6	9.8	16.1
2011	1478	6.2	10.3	16.1
2012	1563	6.0	9.9	16.5
2013	1408	5.3	8.7	14.2
2014	1209	5.3	8.5	13.5
2015	936	4.6	7.3	-

### Time from Entry into Out-of-Home Care to Child Freed

*Of the children who entered out-of-home care for the first time for reasons of abuse, neglect or voluntary surrender and for whom an initial TPR and/or Adoption Surrender petition is filed within 36 months of entering, the time from entry to child freed.*

\* For purposes of this metric, a child is considered 'freed' when he/she has had at least one disposition of a certain type on an Adoption Surrender and TPR docket and there is an outcome indicating the child is freed in UCMS. The freed date is the date of the last disposition on the Adoption Surrender or TPR docket.

Time from Entry into Out-of-Home Care to Child Freed by Filing Type: New York State, 2012 Entry Cohort Year

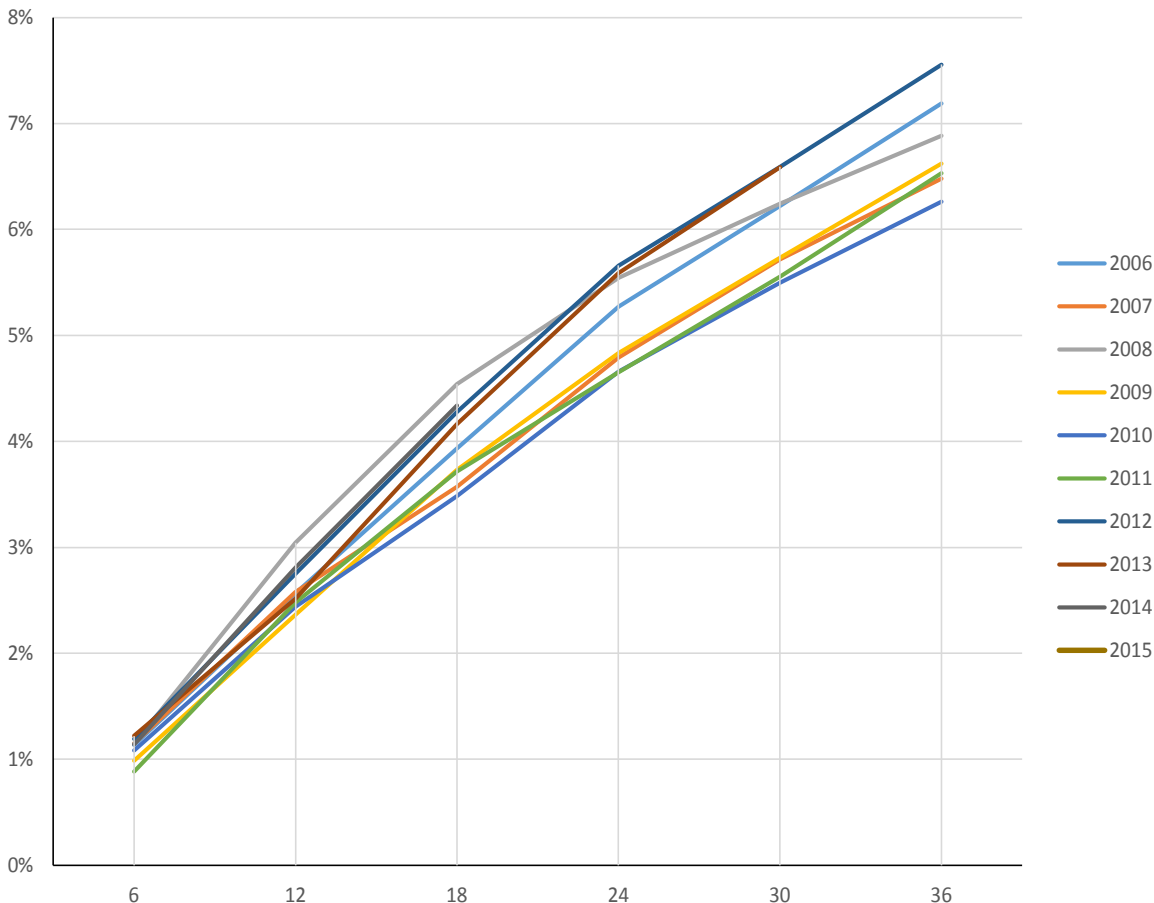


Filing Type	Entry Cohort Year	N*= 2012	Months							
			0	6	12	18	24	30	36	42
AS Filed, No TPR	2012	207	0%	9%	29%	52%	70%	79%	83%	85%
TPR Filed, No AS	2012	961	0%	0%	2%	7%	18%	27%	37%	48%
AS and TPR Filed	2012	555	0%	0%	2%	15%	37%	59%	74%	85%

### Subsequent Abuse/Neglect Filings after the Initial Period of Court Jurisdiction Ends

For children whose period of court jurisdiction ends, the proportion of children who are the subject of a subsequent petition alleging abuse/neglect filed within a given period of time.

Cumulative Percentage of Children with Subsequent Abuse/Neglect Petitions Filed within Time Intervals of Exiting Court Jurisdiction: New York State, 2006-2015 Exit Cohort Years



Exit Cohort Year	Exit Cohort N=	Months from Exiting Court Jurisdiction						
		6	12	18	24	30	36	
2006	15512	1.1%	2.6%	3.9%	5.3%	6.2%	7.2%	
2007	17223	1.1%	2.6%	3.6%	4.8%	5.7%	6.5%	
2008	18671	1.1%	3.0%	4.5%	5.5%	6.2%	6.9%	
2009	19484	1.0%	2.4%	3.7%	4.8%	5.7%	6.6%	
2010	19305	1.1%	2.4%	3.5%	4.7%	5.5%	6.3%	
2011	19136	0.9%	2.5%	3.7%	4.7%	5.6%	6.5%	
2012	17615	1.2%	2.7%	4.3%	5.7%	6.6%	7.6%	
2013	16544	1.2%	2.5%	4.2%	5.6%	6.6%		
2014	16039	1.1%	2.8%	4.3%				
2015	18039	1.1%						