

Child Welfare Court Data Metrics

**KEY INDICATORS 2017
NEW YORK STATE**



Access To Child Welfare Data Online

This document contains a small sample of the child welfare data available from the Child Welfare Court Improvement Project (CWCIP).

If you are looking for more views, disaggregations (ex. age at entry, filing type, disposition type, etc.) and sub-measures of any of the metrics in this packet, there are many more dynamic views and data available online.

For Unified Court System employees, to access the complete data set electronically from inside the court system, please go to the below website. It would be best to contact one of the individuals noted below to assist you with accessing this information online and understanding the data itself.

<https://sp2010-dev.courtnet.org/sites/cf/SitePages/Home.aspx>

Note: you will need to log onto the above site using your PC username and password.

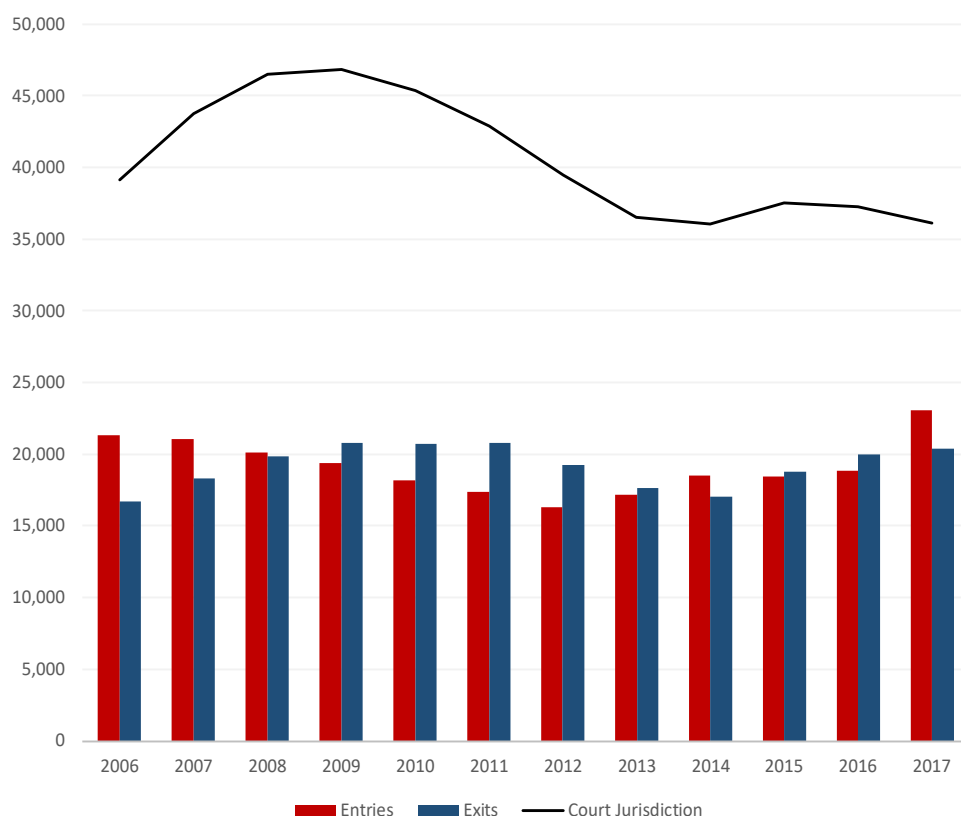
<u>Contact</u>	<u>County/Geographic Area</u>	<u>Phone</u>	<u>Email</u>
Frank Woods	Acting Coordinator	(315) 266-4254	fwoods@nycourts.gov
Trista Borra	Training Manager, Nassau, Suffolk	(516) 493-3943	tborra@nycourts.gov
Jill Baszczyński	Albany, Chemung, Dutchess, Monroe, Onondaga	(845) 431-1869	jbaszczyn@nycourts.gov
Jordan Conan	Queens	(718) 298-1324	jconan@nycourts.gov
Mizraín K. Cortés	Kings	(347) 401-9909	mkcortes@nycourts.gov
Denise Dizzine	Bronx, Orange	(718) 618-2175	ddizzine@nycourts.gov
Sheila McCarthy	SSIP	(718) 298-1822	semccart@nycourts.gov
Aimee L. Neri	Chautauqua, Erie	(716) 845-1833	aneri@nycourts.gov
Robert Rosenhaus	SSIP, Westchester	(914) 824-5564	rrosenha@nycourts.gov
Sue Shafer	Broome, Oneida	(315) 266-4256	sshafer@nycourts.gov
Melissa Wade	New York, Richmond	(646) 386-5639	mwade@nycourts.gov

Index of Metrics

Overview	Pg. 1
Time from Entry into Out-of-Home Care to Permanency Achieved	Pg. 2-7
Time from Abuse/Neglect Petition Filing to Issue Joined	Pg. 8
Time from Abuse/Neglect Petition Filing to Adjudication	Pg. 9
Time from Abuse/Neglect Petition Filing to Disposition	Pg. 10
Time from Entry into Out-Of-Home Care to Completion of Initial Permanency Hearing	Pg. 11
Time between Subsequent Permanency Hearings (non-freed child)	Pg. 12
Time to Initial Freed-Child Permanency Hearings	Pg. 13
Time between Subsequent Permanency Hearings (post-freed child)	Pg. 14
Time from Entry into Out-of-Home Care to Termination of Parental Rights Petition Filing	Pg. 15
Time from Termination of Parent Rights Petition Filing to Issue Joined	Pg. 16
Time from Termination of Parent Rights Petition Filing to Adjudication	Pg. 17
Time from TPR Petition Filing to Disposition	Pg. 18
Time from Entry into Out-of-Home Care to Child Freed	Pg. 19
Subsequent Abuse/Neglect Filings after the Initial Period of Court Jurisdiction Ends	Pg. 20

Overview

Number of Children Entering & Exiting During the Year and Number under Court Jurisdiction on the First Day of the Year
by Calendar Year: First Original Petitions, Abuse/Neglect/Voluntary Filings, 2006-2017, New York State

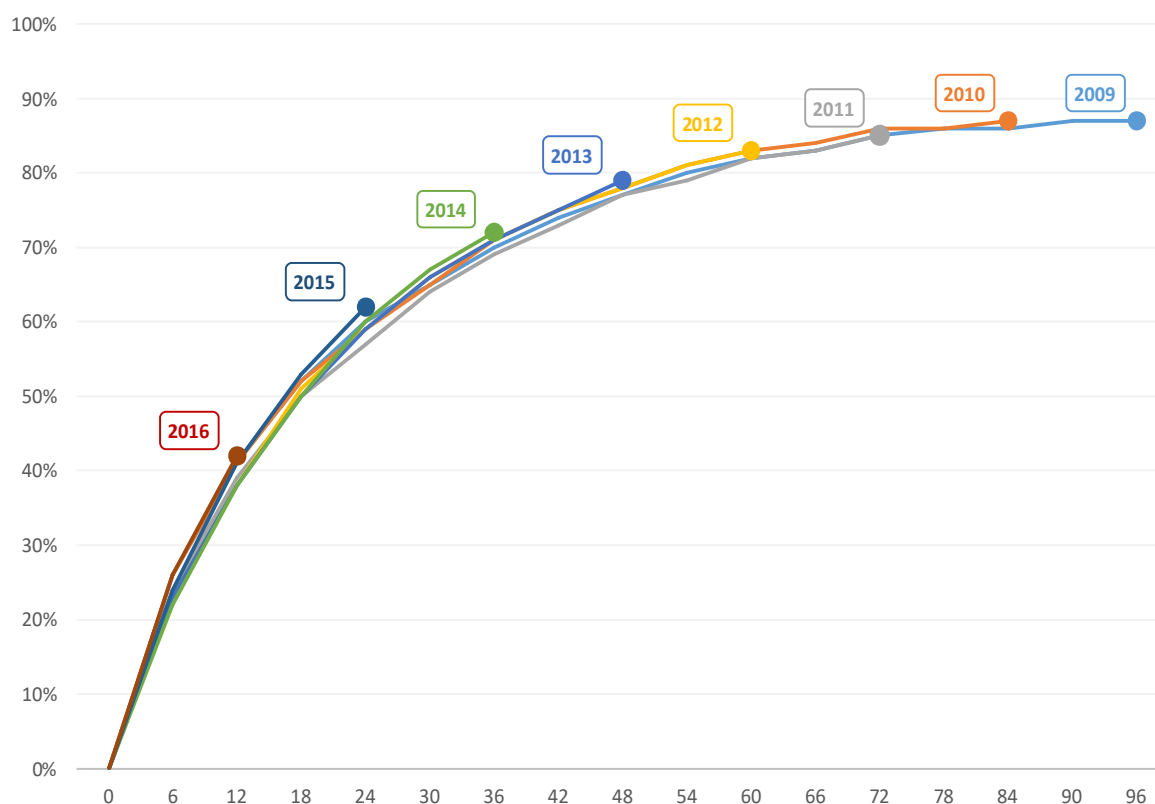


Cohort	Year											
	2006	2007	2008	2009	2010	2011	2012	2013	2014	2015	2016	2017
Entries	21,310	21,070	20,111	19,344	18,209	17,362	16,331	17,179	18,510	18,467	18,811	23,086
Exits	16,705	18,303	19,830	20,779	20,695	20,796	19,265	17,634	17,036	18,753	19,956	20,393
Court Jurisdiction	39,138	43,743	46,511	46,794	45,362	42,870	39,437	36,506	36,046	37,521	37,240	36,090

Time from Entry into Out-of-Home Care to Permanency Achieved

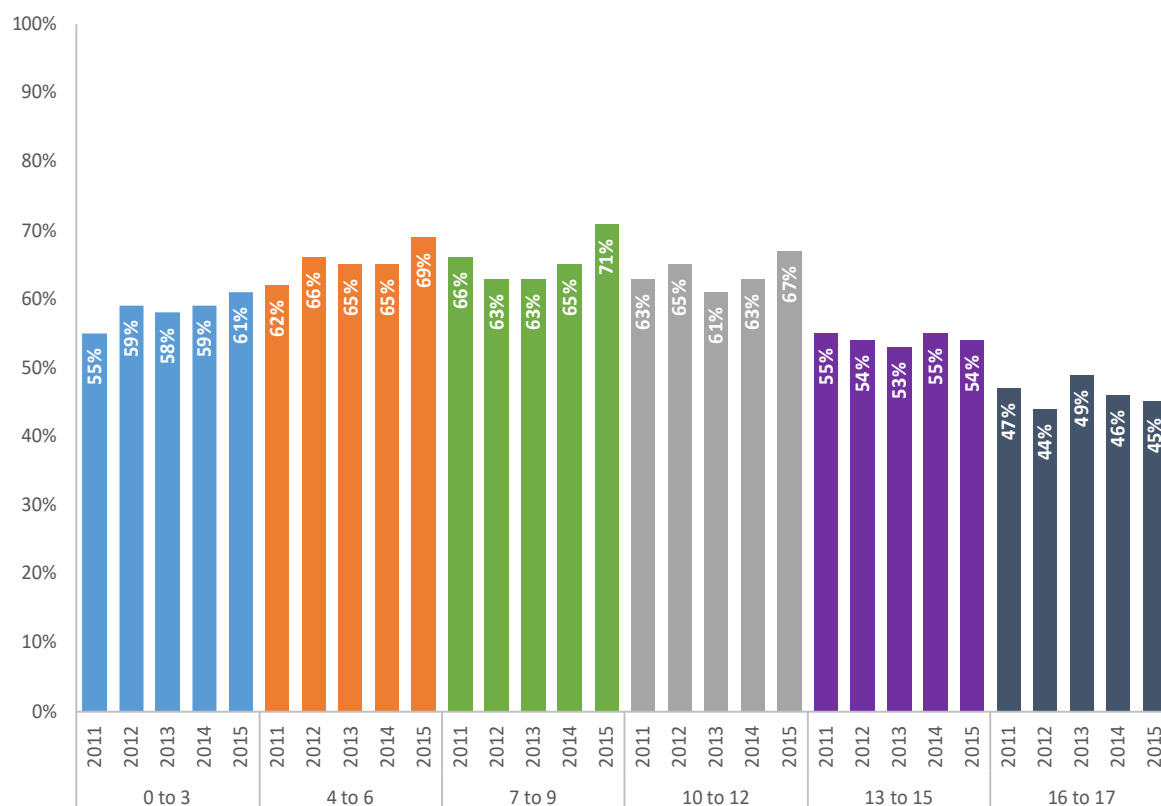
Among children who enter out-of-home care for the first time in a given period for reasons of abuse/neglect or voluntary placement, the time from entering out-of-home care to permanency achieved by reunification, permanent custody or guardianship with a fit and willing relative or suitable person or adoption.

Proportion of Children Achieving Permanency at 6 Month Intervals from Entering Out-of-Home Care by Entry Cohort Year(s): New York State, 2006-2016



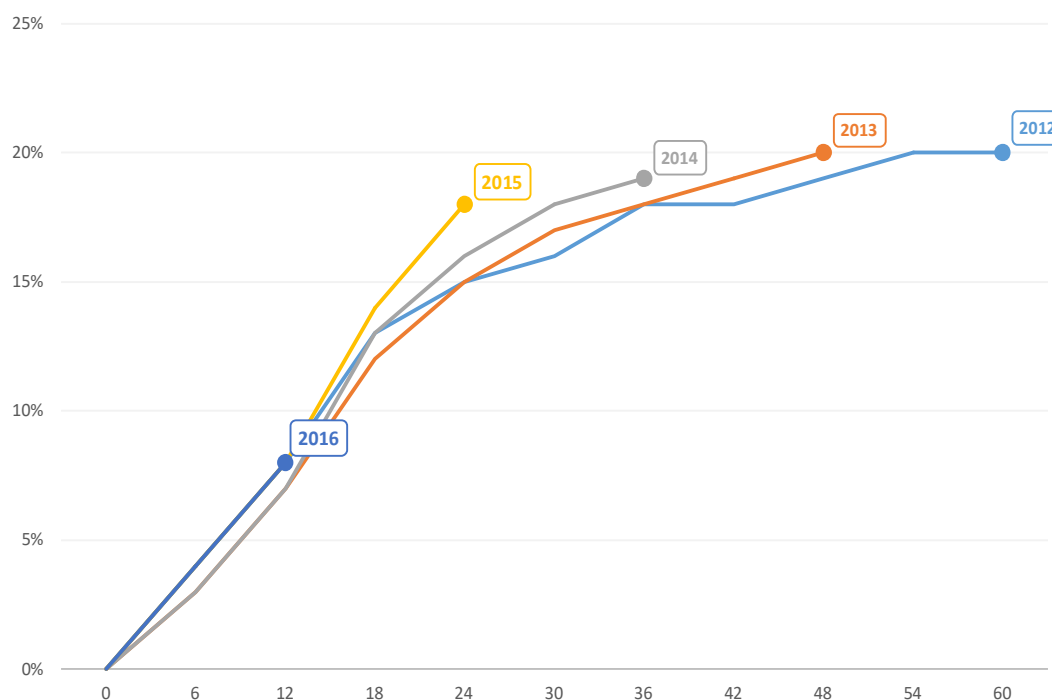
Entry Cohort Year	N=	Months																			
		0	6	12	18	24	30	36	42	48	54	60	66	72	78	84	90	96	102	108	114
2006	12167	0%	25%	38%	47%	54%	60%	65%	70%	73%	77%	79%	81%	82%	84%	84%	85%	86%	86%	86%	86%
2007	11053	0%	26%	38%	48%	55%	62%	67%	71%	75%	77%	80%	81%	83%	84%	85%	85%	86%	86%	86%	87%
2008	10682	0%	28%	41%	51%	58%	64%	69%	73%	77%	79%	82%	84%	85%	86%	86%	87%	87%	88%	88%	
2009	10544	0%	26%	41%	52%	60%	65%	70%	74%	77%	80%	82%	83%	85%	86%	86%	87%	87%			
2010	10045	0%	26%	41%	52%	59%	65%	71%	75%	78%	81%	83%	84%	86%	86%	87%					
2011	9352	0%	24%	39%	50%	57%	64%	69%	73%	77%	79%	82%	83%	85%							
2012	8696	0%	23%	38%	51%	59%	66%	71%	75%	78%	81%	83%									
2013	8602	0%	23%	38%	50%	59%	66%	71%	75%	79%											
2014	9038	0%	22%	38%	50%	60%	67%	72%													
2015	9041	0%	24%	41%	53%	62%															
2016	9003	0%	26%	42%																	

Proportion of Children Achieving Permanency at 24 Months from Entering Out-of-Home Care by Age at Entry: New York State, 2006-2015



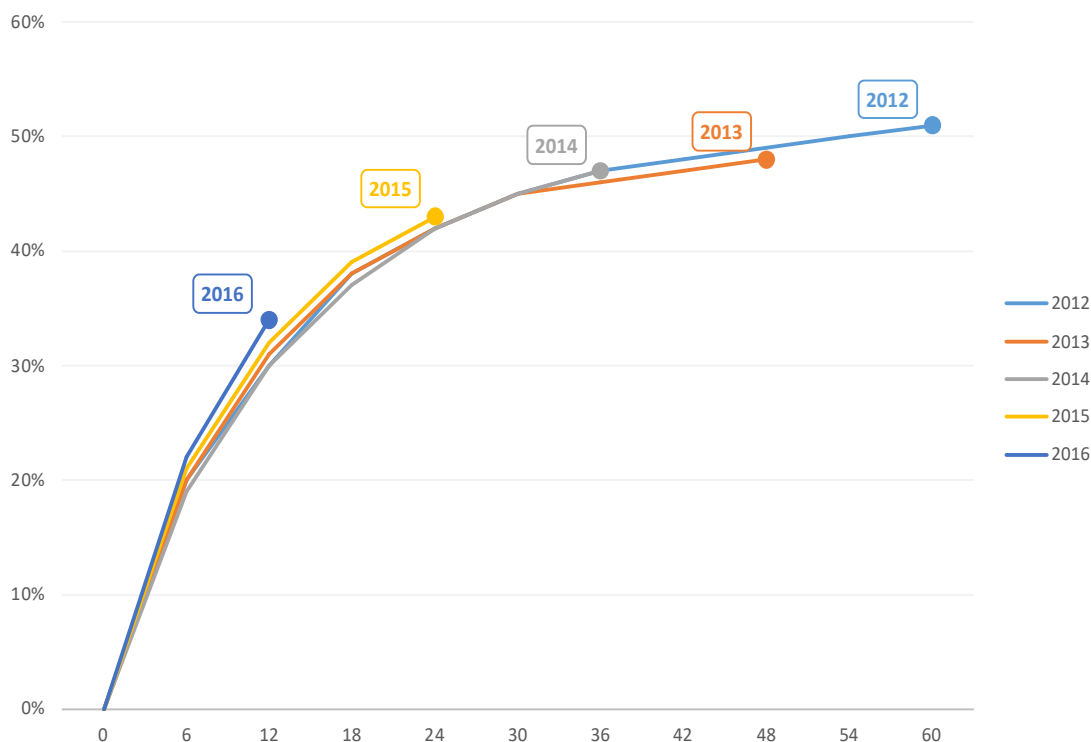
Age at Entry	Entry Cohort Year	N=	Months			
			6	12	18	24
All Ages	2006	12167	25%	38%	47%	54%
	2007	11053	26%	38%	48%	55%
	2008	10682	28%	41%	51%	58%
	2009	10544	26%	41%	52%	60%
	2010	10045	26%	41%	52%	59%
	2011	9352	24%	39%	50%	57%
	2012	8696	23%	38%	51%	59%
	2013	8602	23%	38%	50%	59%
	2014	9038	22%	38%	50%	60%
	2015	9041	24%	41%	53%	62%

Proportion of Children Achieving Permanency through Custody/Guardianship at 6 Month Intervals from Entering Out-of-Home Care by Entry Cohort Year(s): New York State, 2006-2016



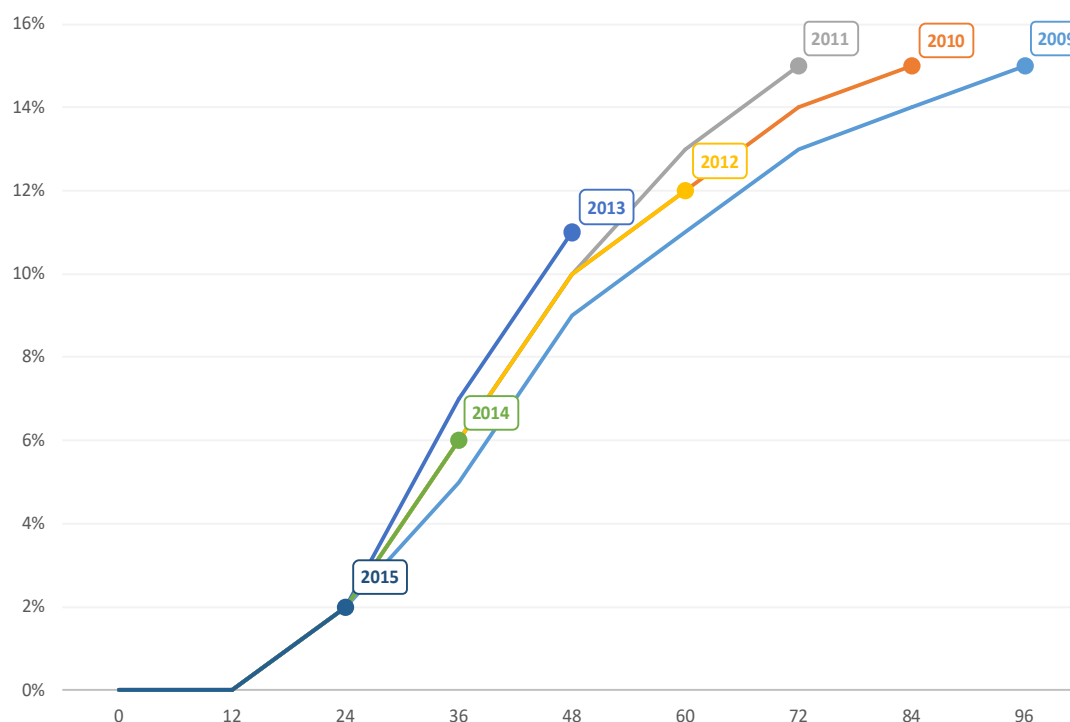
Entry Cohort Year	N=	Months																						
		0	6	12	18	24	30	36	42	48	54	60	66	72	78	84	90	96	102	108	114	120	126	132
2006	12167	0%	2%	4%	6%	7%	8%	9%	9%	9%	11%	11%	11%	11%	11%	11%	11%	11%	11%	11%	11%	11%	11%	11%
2007	11053	0%	2%	5%	7%	9%	10%	10%	11%	11%	11%	11%	12%	12%	13%	13%	13%	13%	13%	13%	13%	13%	13%	13%
2008	10682	0%	2%	5%	7%	9%	10%	11%	12%	12%	12%	12%	12%	12%	12%	12%	12%	12%	12%	12%	12%	12%	12%	12%
2009	10544	0%	2%	5%	8%	10%	12%	12%	13%	13%	13%	14%	14%	14%	14%	14%	14%	14%	14%	14%	14%	14%	14%	14%
2010	10045	0%	3%	6%	9%	12%	13%	13%	15%	15%	15%	15%	15%	16%	16%	16%	16%	16%	16%	16%	16%	16%	16%	16%
2011	9352	0%	2%	6%	10%	12%	14%	15%	15%	16%	16%	16%	16%	16%	18%	18%	18%	18%	18%	18%	18%	18%	18%	18%
2012	8696	0%	4%	8%	13%	15%	16%	18%	18%	19%	20%	20%	20%	20%	20%	20%	20%	20%	20%	20%	20%	20%	20%	20%
2013	8602	0%	3%	7%	12%	15%	17%	18%	19%	20%	20%	20%	20%	20%	20%	20%	20%	20%	20%	20%	20%	20%	20%	20%
2014	9038	0%	3%	7%	13%	16%	18%	19%	19%	19%	19%	19%	19%	19%	19%	19%	19%	19%	19%	19%	19%	19%	19%	19%
2015	9041	0%	4%	8%	14%	18%	18%	18%	18%	18%	18%	18%	18%	18%	18%	18%	18%	18%	18%	18%	18%	18%	18%	18%
2016	9003	0%	4%	8%	8%	8%	8%	8%	8%	8%	8%	8%	8%	8%	8%	8%	8%	8%	8%	8%	8%	8%	8%	8%

Proportion of Children Achieving Permanency through Reunification at 6 Month Intervals from Entering Out-of-Home Care by Entry Cohort Year(s): New York State, 2006-2016



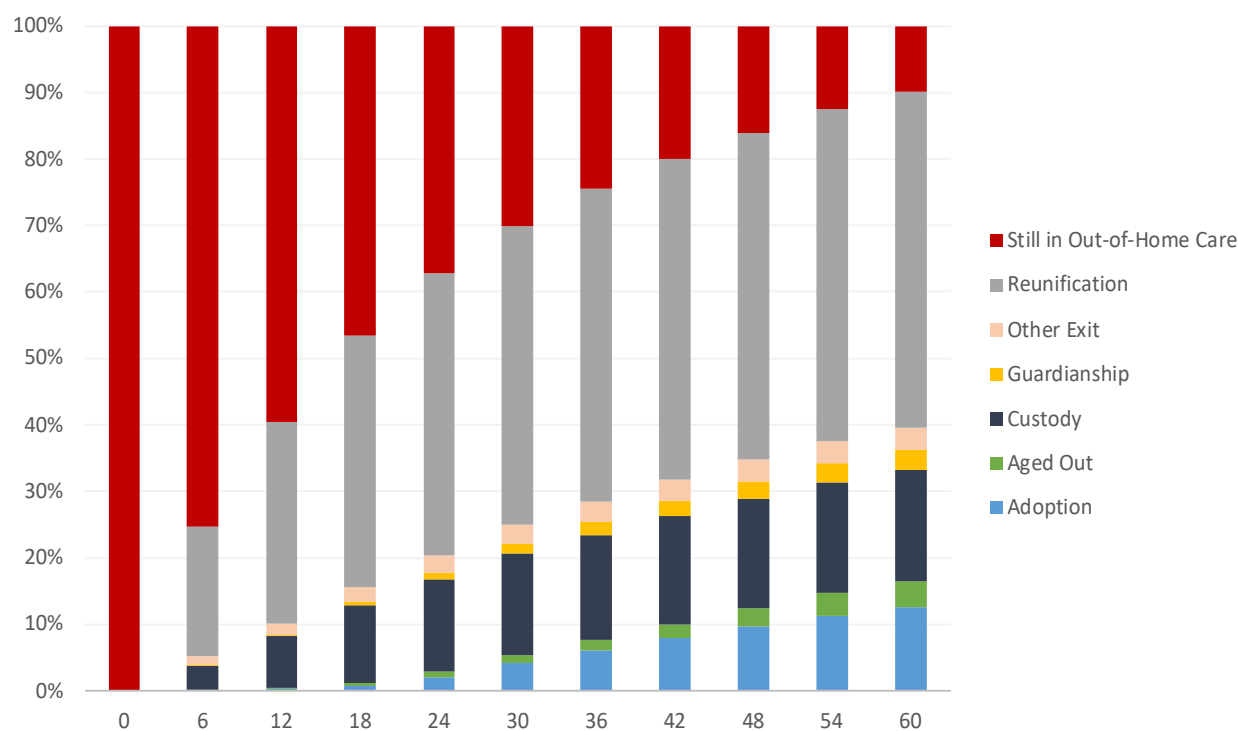
Entry Cohort Year	N=	Months																									
		0	6	12	18	24	30	36	42	48	54	60	66	72	78	84	90	96	102	108	114	120	126	132			
2006	12167	0%	22%	33%	40%	45%	48%	50%	52%	54%	55%	56%	56%	57%	57%	57%	57%	57%	57%	57%	57%	57%	57%	57%	57%	57%	57%
2007	11053	0%	24%	33%	40%	45%	49%	51%	53%	54%	55%	56%	56%	56%	57%	57%	57%	57%	57%	57%	57%	57%	57%	57%	57%	57%	57%
2008	10682	0%	25%	35%	42%	47%	50%	53%	54%	55%	56%	57%	57%	58%	58%	58%	58%	58%	58%	58%	58%	58%	58%	58%	58%	58%	58%
2009	10544	0%	24%	36%	43%	48%	51%	53%	55%	55%	56%	57%	57%	57%	57%	58%	58%	58%	58%	58%	58%	58%	58%	58%	58%	58%	58%
2010	10045	0%	23%	35%	42%	47%	49%	51%	53%	54%	55%	55%	56%	56%	56%	56%	56%	56%	56%	56%	56%	56%	56%	56%	56%	56%	56%
2011	9352	0%	21%	32%	39%	44%	47%	48%	50%	51%	51%	52%	52%	53%	53%	53%	53%	53%	53%	53%	53%	53%	53%	53%	53%	53%	53%
2012	8696	0%	20%	30%	38%	42%	45%	47%	48%	49%	50%	51%	51%	51%	51%	51%	51%	51%	51%	51%	51%	51%	51%	51%	51%	51%	51%
2013	8602	0%	20%	31%	38%	42%	45%	46%	47%	48%	48%	48%	48%	48%	48%	48%	48%	48%	48%	48%	48%	48%	48%	48%	48%	48%	48%
2014	9038	0%	19%	30%	37%	42%	45%	47%	47%	47%	47%	47%	47%	47%	47%	47%	47%	47%	47%	47%	47%	47%	47%	47%	47%	47%	47%
2015	9041	0%	21%	32%	39%	43%	43%	43%	43%	43%	43%	43%	43%	43%	43%	43%	43%	43%	43%	43%	43%	43%	43%	43%	43%	43%	43%
2016	9003	0%	22%	34%	34%	34%	34%	34%	34%	34%	34%	34%	34%	34%	34%	34%	34%	34%	34%	34%	34%	34%	34%	34%	34%	34%	34%

Proportion of Children Achieving Permanency through Adoption at 6 Month Intervals from Entering Out-of-Home Care
by Entry Cohort Year(s): New York State, 2006-2016



Entry Cohort Year	N=	Months																							
		0	6	12	18	24	30	36	42	48	54	60	66	72	78	84	90	96	102	108	114	120	126	132	
2006	12167	0%	0%	0%	1%	2%	3%	6%	8%	10%	12%	13%	14%	16%	16%	17%	17%	18%	18%	18%	18%	19%	19%	19%	
2007	11053	0%	0%	0%	1%	1%	3%	5%	7%	9%	11%	12%	13%	14%	15%	15%	16%	16%	17%	17%	17%	17%			
2008	10682	0%	0%	0%	1%	2%	3%	5%	8%	10%	11%	13%	14%	15%	15%	16%	16%	17%	17%	17%					
2009	10544	0%	0%	0%	1%	2%	3%	5%	7%	9%	10%	11%	12%	13%	14%	14%	15%	15%							
2010	10045	0%	0%	0%	1%	2%	3%	6%	8%	10%	11%	12%	13%	14%	14%	15%									
2011	9352	0%	0%	0%	1%	2%	4%	6%	8%	10%	12%	13%	14%	15%											
2012	8696	0%	0%	0%	1%	2%	4%	6%	8%	10%	11%	12%													
2013	8602	0%	0%	0%	1%	2%	4%	7%	9%	11%															
2014	9038	0%	0%	0%	1%	2%	4%	6%																	
2015	9041	0%	0%	0%	1%	2%																			
2016	9003	0%	0%	0%																					

Proportion of Children Still in Care and Exiting by Exit Type at 6 Month Intervals from the Date of Entering Out-of-Home Care: New York State, 2012 Entry Cohort Year

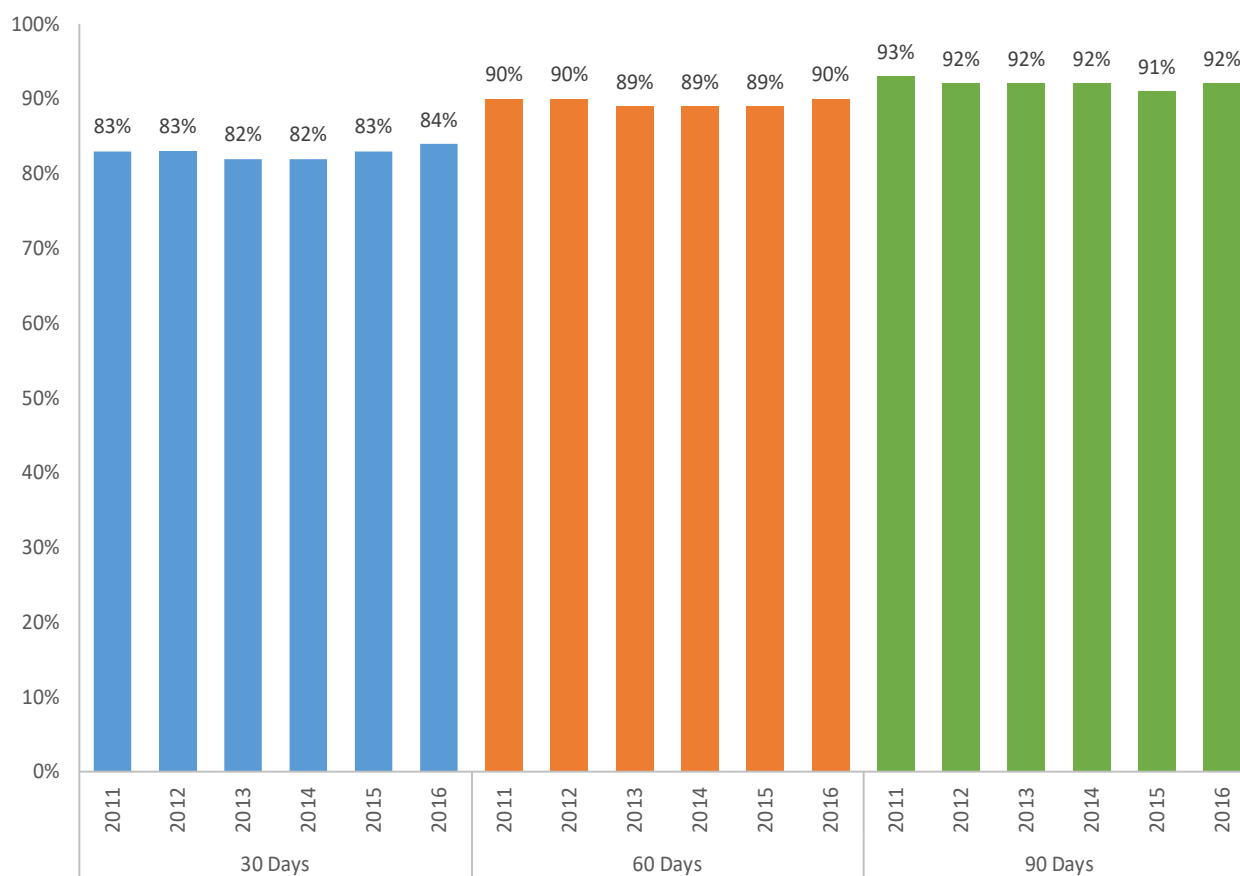


Exit Type	N = 8696									
	Months									
	6	12	18	24	30	36	42	48	54	60
Adoption	0%	0%	1%	2%	4%	6%	8%	10%	11%	12%
Aged Out	0%	0%	1%	1%	1%	2%	2%	3%	3%	4%
Custody	4%	8%	12%	14%	15%	16%	16%	16%	17%	17%
Guardianship	0%	0%	1%	1%	1%	2%	2%	3%	3%	3%
Other Exit	1%	2%	2%	3%	3%	3%	3%	3%	3%	3%
Reunification	20%	30%	38%	42%	45%	47%	48%	49%	50%	51%
Still in Out-of-Home Care	75%	60%	47%	37%	30%	24%	20%	16%	12%	10%

Time from Abuse/Neglect Petition Filing to Issue Joined

Among children for whom an original abuse/neglect petition is filed during a given period, the time from petition filing to issue is joined.

Proportion of Children Whose Case has Reached Issue Joined within 30/60/90 Days from Petition Filing Date by Entry Cohort Year: New York State, 2011-2016 Entry Cohort Years

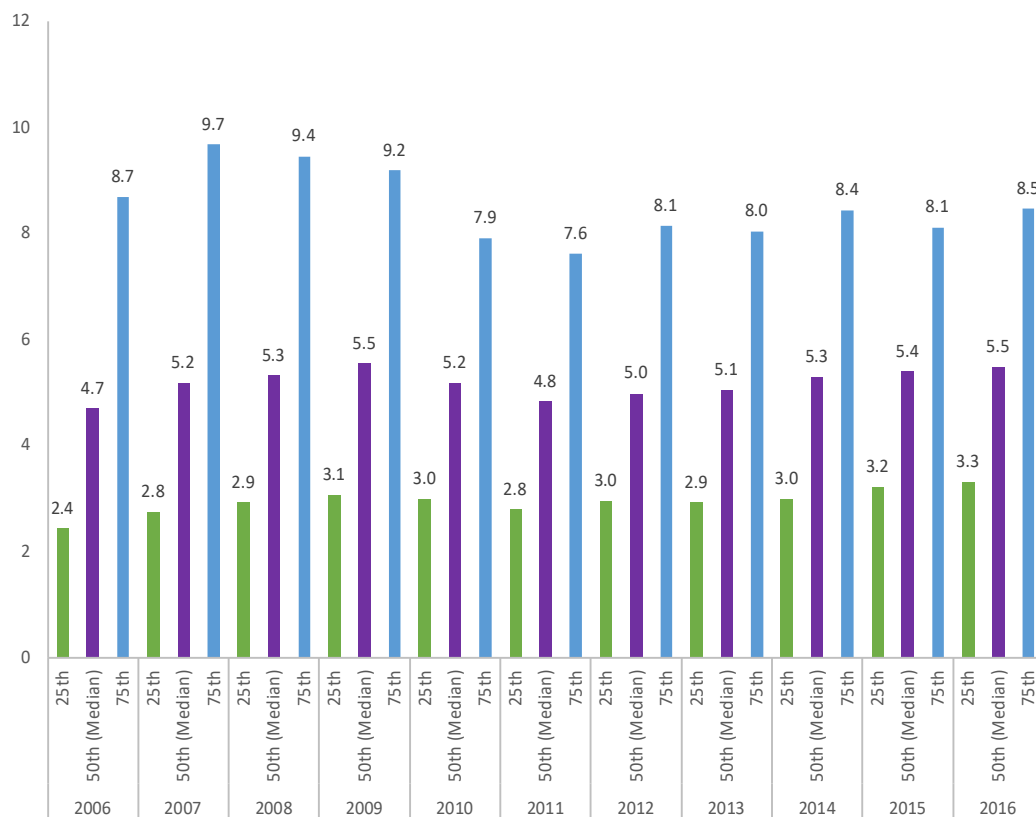


Entry Cohort Year	N=	Days		
		30	60	90
2011	16885	83%	90%	93%
2012	15923	83%	90%	92%
2013	16763	82%	89%	92%
2014	18135	82%	89%	92%
2015	18022	83%	89%	91%
2016	18469	84%	90%	92%

Time from Abuse/Neglect Petition Filing to Adjudication

Among children for whom an original abuse/neglect petition is filed during a given period, the time from petition filing to adjudication.

Quartile Time from Abuse/Neglect Petition Filing to Adjudication for Children with a First, Original Abuse/Neglect Petition Filing: New York State, 2006-2016 Entry Cohort Years

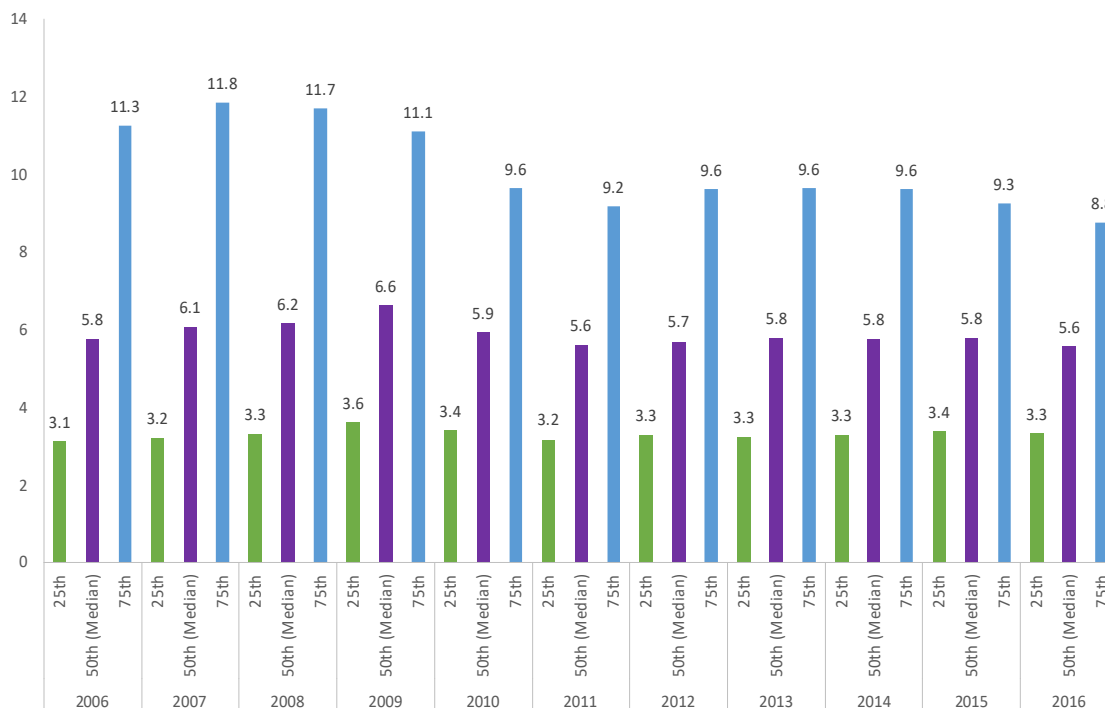


Entry Cohort Year	N=	Quartile		
		25th	50th (Median)	75th
2006	20617	2.4	4.7	8.7
2007	20516	2.8	5.2	9.7
2008	19577	2.9	5.3	9.4
2009	18923	3.1	5.5	9.2
2010	17758	3.0	5.2	7.9
2011	16885	2.8	4.8	7.6
2012	15923	3.0	5.0	8.1
2013	16763	2.9	5.1	8.0
2014	18135	3.0	5.3	8.4
2015	18022	3.2	5.4	8.1
2016	18469	3.3	5.5	8.5

Time from Abuse/Neglect Petition Filing to Disposition

Among children for whom an original abuse/neglect petition is filed during a given period and the court makes a finding of abuse/neglect or the respondent admits or consents to the jurisdiction of the court, the time from petition filing to the entry of a dispositional order.

Quartile Time from Abuse/Neglect Petition Filing to Disposition for Children with a First, Original Abuse/Neglect Petition
Filing: New York State, 2006-2016 Entry Cohort Years

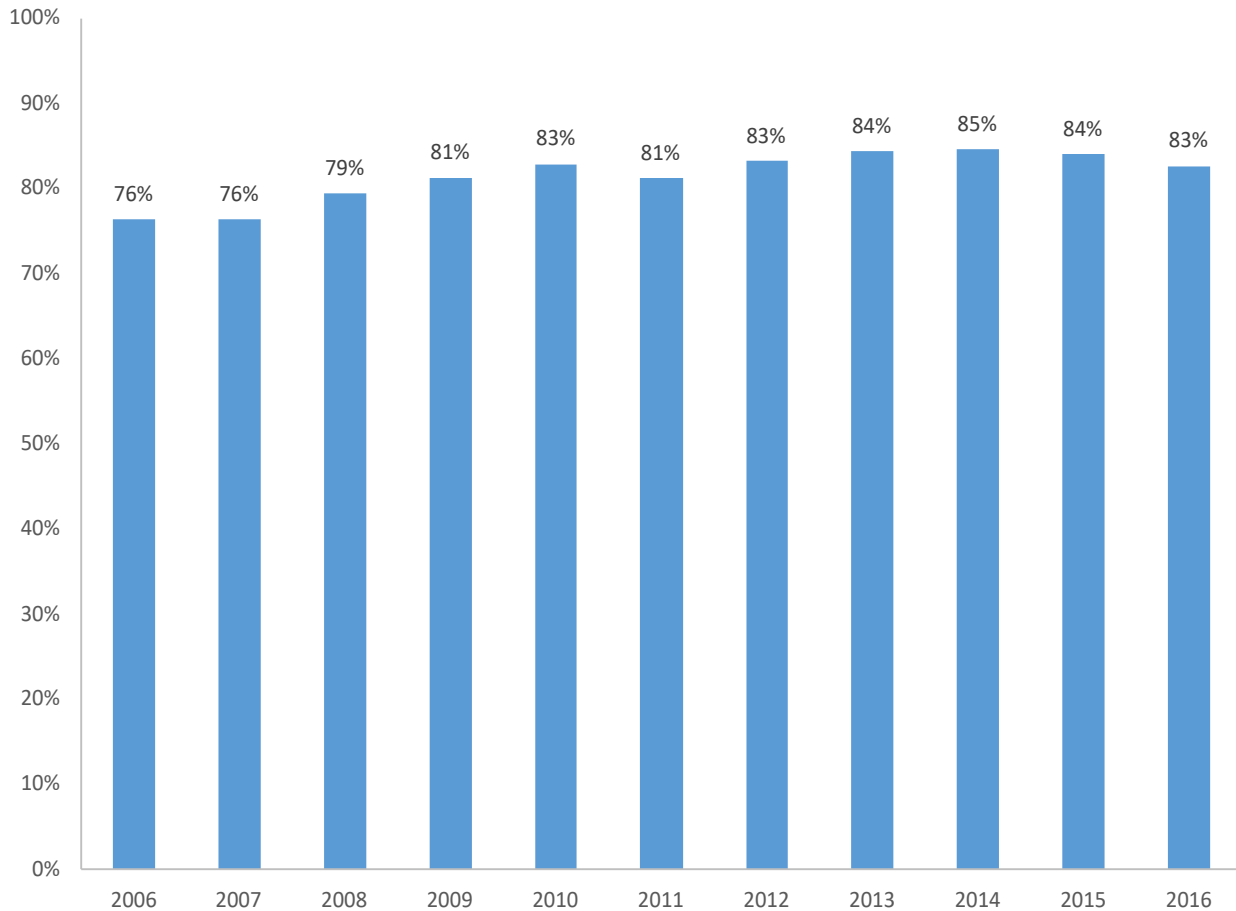


Entry Cohort Year	N=	Quartile		
		25th	50th (Median)	75th
2006	14727	3.1	5.8	11.3
2007	14470	3.2	6.1	11.8
2008	13742	3.3	6.2	11.7
2009	13170	3.6	6.6	11.1
2010	12504	3.4	5.9	9.6
2011	11820	3.2	5.6	9.2
2012	10695	3.3	5.7	9.6
2013	10790	3.3	5.8	9.6
2014	11627	3.3	5.8	9.6
2015	11081	3.4	5.8	9.3
2016	10721	3.3	5.6	8.8

Time from Entry into Out-Of-Home Care to Completion of Initial Permanency Hearing

Among children who enter out-of-home care for the first time in a given period for reasons of abuse/neglect or voluntary placement, the time from entering out-of-home care to the completion of the initial permanency hearing.

Proportion of Initial Permanency Hearings Completed within 9 Months from the Date of Entry into Out-of-Home Care:
New York State, 2006-2016 Entry Cohort Years

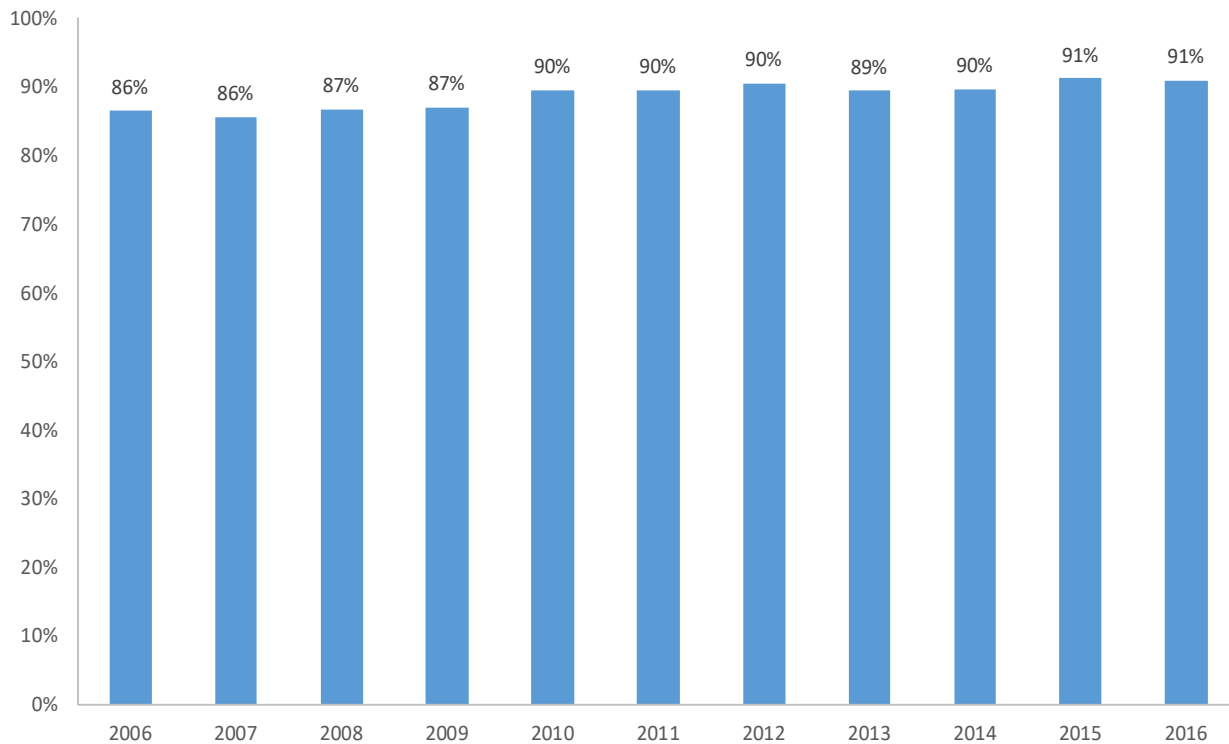


Entry Cohort Year	N=	Completed @ 9 Months	
		#	%
2006	7993	6101	76%
2007	7102	5421	76%
2008	6751	5359	79%
2009	6633	5390	81%
2010	6327	5240	83%
2011	6187	5023	81%
2012	5759	4793	83%
2013	5679	4788	84%
2014	6118	5173	85%
2015	5830	4895	84%
2016	5698	4706	83%

Time between Subsequent Permanency Hearings

Among children who enter out-of-home care for the first time in a given period for reasons of abuse/neglect or voluntary placement and prior to a child being freed for adoption, the time from a completed permanency hearing to the next, subsequent completed permanency hearing.

Cumulative Percentage of 1st Subsequent, Non Freed-Child Permanency Hearings Completed within 7 Months from the Date of the Prior Completed Permanency Hearing for Hearings Completed by Entry Cohort Year, as of December 31st, 2017: New York State, 2006-2016 Entry Cohort Years

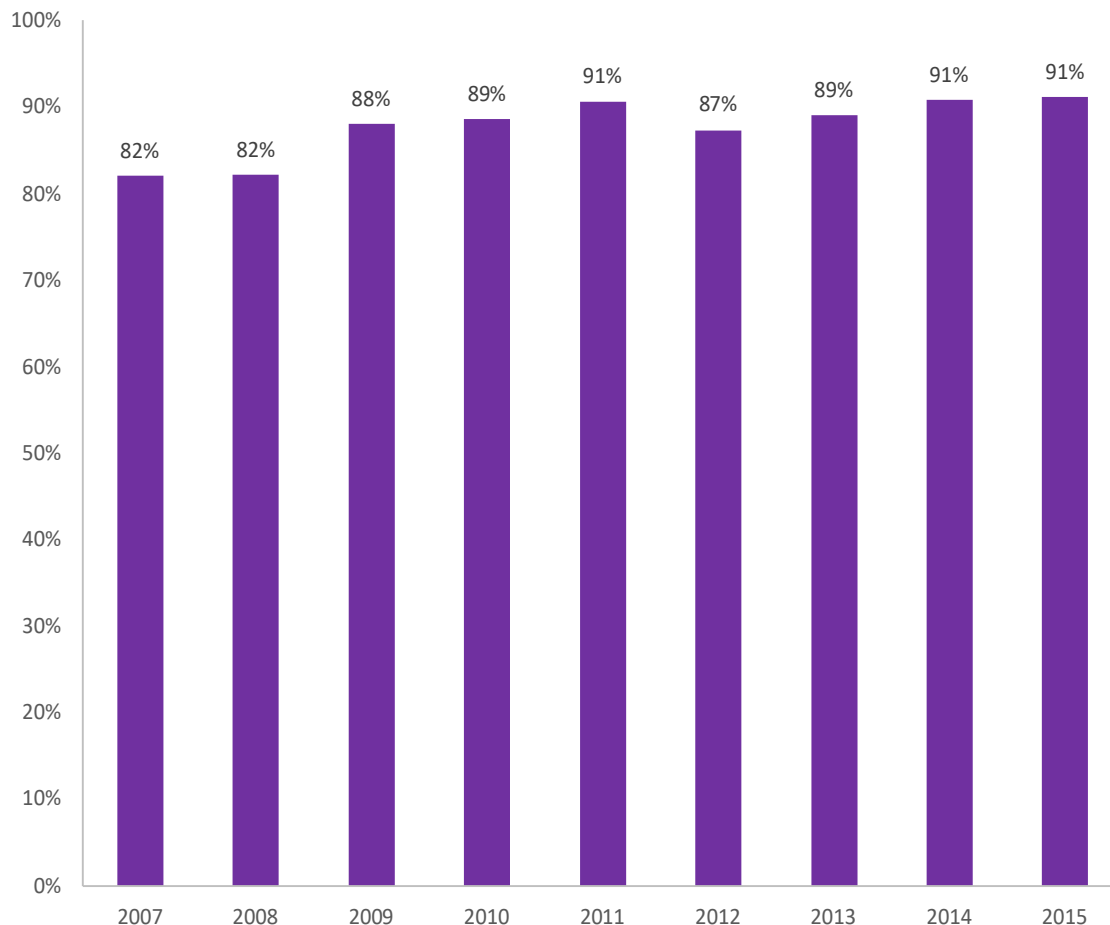


Entry Cohort Year	N=	Completed @ 7 Months	
		#	%
2006	5917	5,118	86%
2007	5244	4,488	86%
2008	4933	4,277	87%
2009	4785	4,160	87%
2010	4592	4,112	90%
2011	4386	3,927	90%
2012	4035	3,649	90%
2013	4008	3,585	89%
2014	4239	3,799	90%
2015	3973	3,626	91%
2016	2258	2,053	91%

Time to Initial Freed-Child Permanency Hearings

Among children who enter out-of-home care for the first time in a given period for reasons of abuse/neglect or voluntary placement and are subsequently freed, the time from the freed date to the initial completed freed child permanency hearing.

Cumulative Percentage of Initial Freed-Child Permanency Hearings Completed within 60 Days from the Child Freed Date by Entry Cohort Year, as of December 31st, 2017: New York State, 2007-2015 Entry Cohort Years



Entry Cohort Year	N=	Completed @ 60 Days	
		#	%
2007	1139	934	82%
2008	1338	1099	82%
2009	1413	1244	88%
2010	1434	1270	89%
2011	1478	1340	91%
2012	1207	1054	87%
2013	1228	1093	89%
2014	992	901	91%
2015	667	608	91%

Time between Subsequent Permanency Hearings

Among children who enter out-of-home care for the first time in a given period for reasons of abuse/neglect or voluntary placement and following a child being freed for adoption, the time from a completed permanency hearing to the next, subsequent completed permanency hearing.

Cumulative Percentage of 1st Subsequent, Post Freed-Child Permanency Hearings Completed within 7 Months from the Date of the Prior Completed Permanency Hearing for Hearings Completed by Entry Cohort Year, as of December 31st, 2017: New York State, 2006-2015 Entry Cohort Years

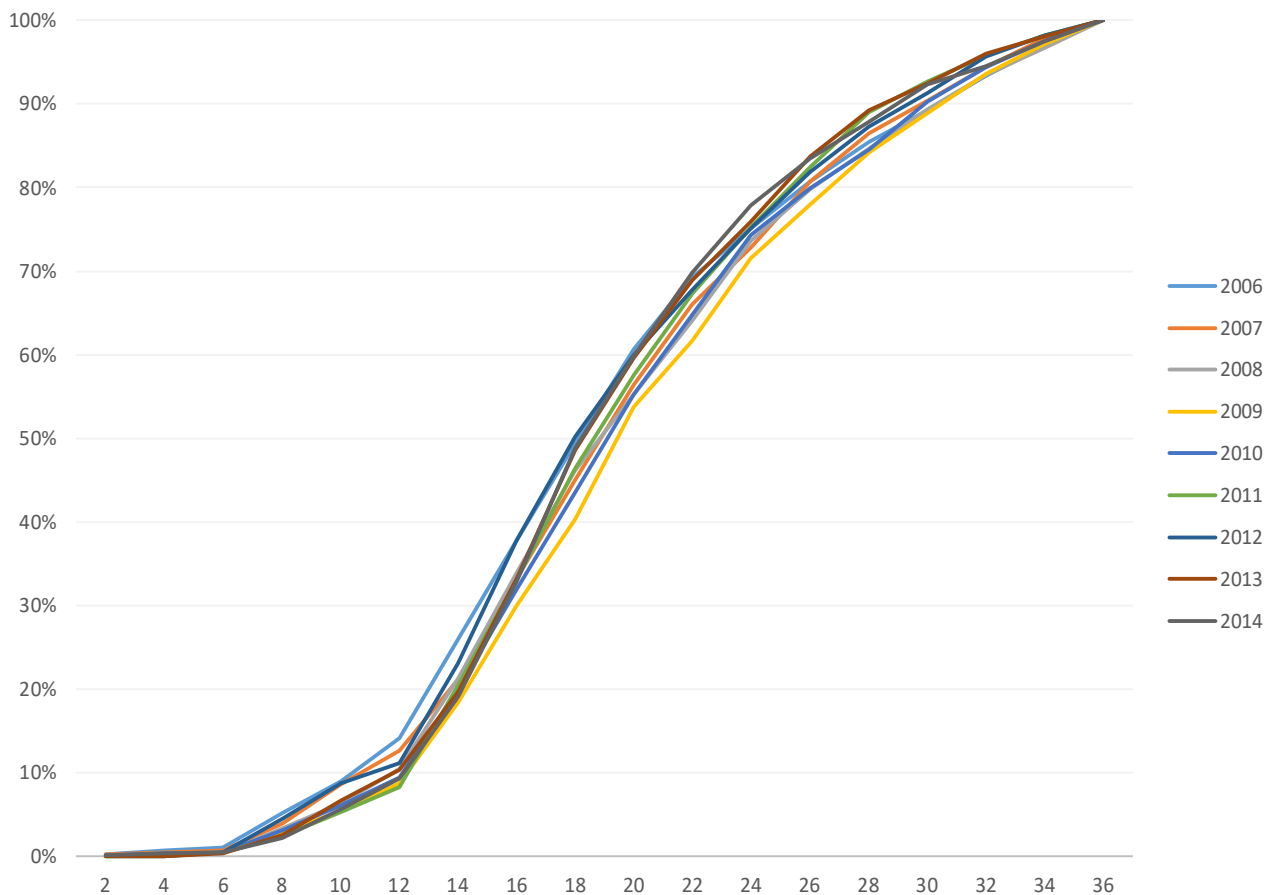


Entry Cohort Year	N=	Completed @ 7 Months	
		#	%
2006	3580	3,352	94%
2007	3245	3,113	96%
2008	3582	3,441	96%
2009	3388	3,280	97%
2010	3035	2,938	97%
2011	3308	3,208	97%
2012	2419	2,355	97%
2013	2030	1,965	97%
2014	1210	1,193	99%
2015	518	510	98%

Time from Entry into Out-of-Home Care to Termination of Parental Rights Petition Filing

Among children for whom a first TPR petition has been filed within a given period, the time from entering out-of-home care to the time of the TPR filing.

Distributive Percentage of Children for whom a First TPR Petition was Filed within 36 Months from Entering Out-of-Home Care by Time to Filing at 6 Month Intervals: New York State, 2006-2014 Entry Cohort Years

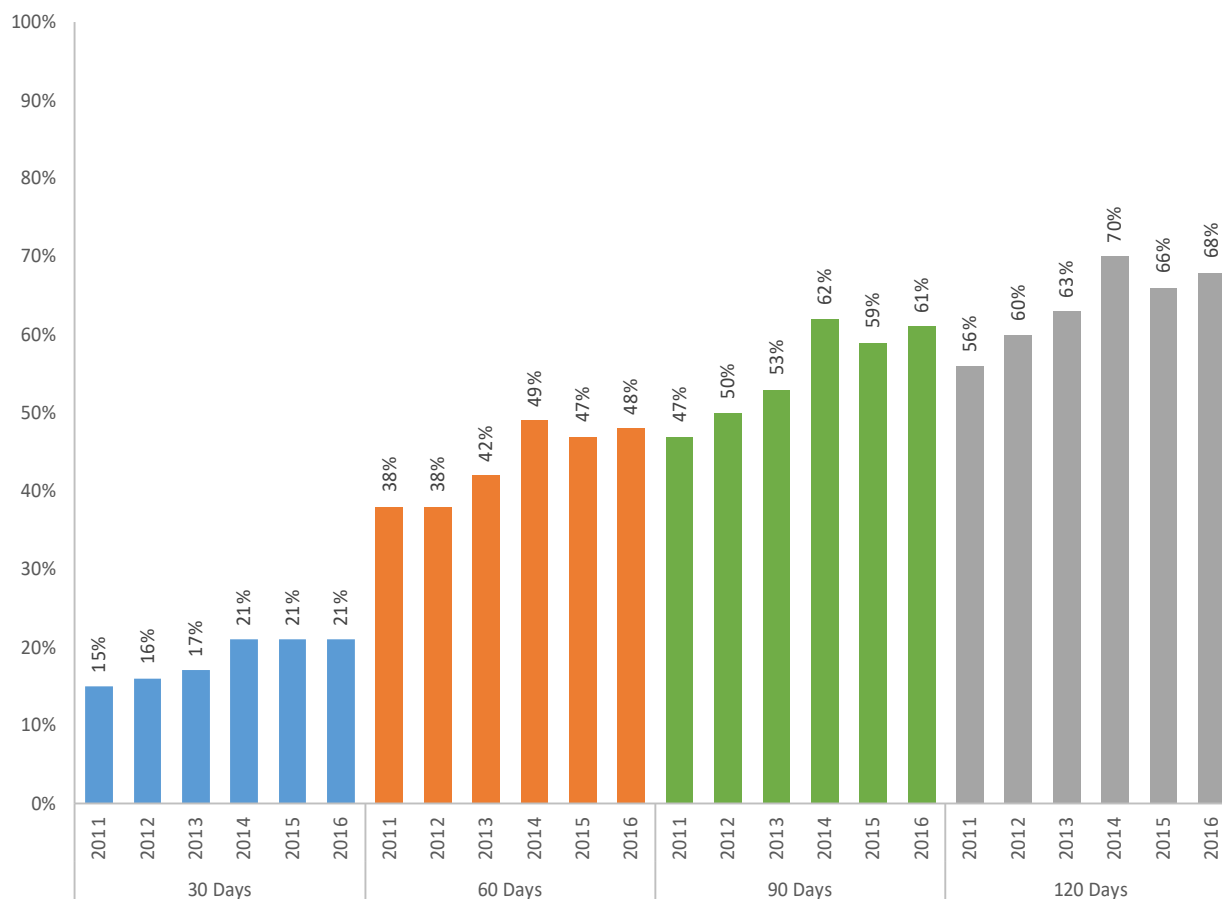


Entry Cohort Year	N=	Cumulative % of TPRs Filed at X Months					
		6	12	18	24	30	36
2006	2347	1%	14%	49%	75%	89%	100%
2007	1954	1%	13%	45%	73%	90%	100%
2008	1875	0%	10%	46%	74%	89%	100%
2009	1768	0%	9%	40%	72%	89%	100%
2010	1675	0%	9%	44%	74%	90%	100%
2011	1748	1%	8%	46%	75%	93%	100%
2012	1507	1%	11%	50%	75%	91%	100%
2013	1563	0%	10%	49%	76%	92%	100%
2014	1539	1%	9%	49%	78%	92%	100%

Time from Termination of Parent Rights Petition Filing to Issue Joined

Among children for whom an initial TPR petition is filed during a given period, the time from petition filing to issue is joined.

Proportion of Children Whose Case has Reached Issue Joined within 30/60/90/120 Days from TPR Petition Filing Date by Year: New York State, 2011-2016 Entry Cohort Years

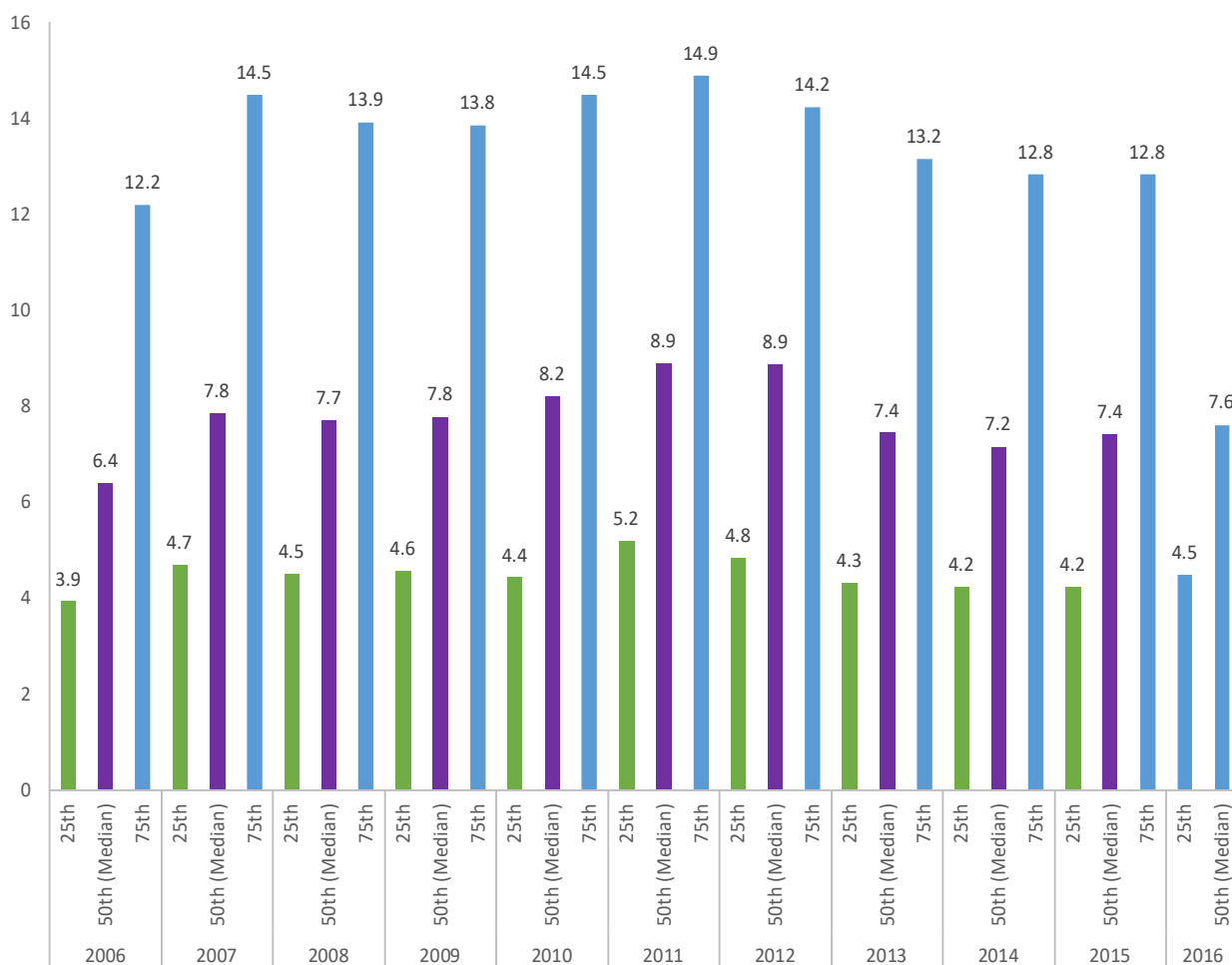


TPR Filing Entry Cohort	N=	% Complete at X Days			
		30	60	90	120
2011	2275	15%	38%	47%	56%
2012	2547	16%	38%	50%	60%
2013	2293	17%	42%	53%	63%
2014	2081	21%	49%	62%	70%
2015	2057	21%	47%	59%	66%
2016	1935	21%	48%	61%	68%

Time from Termination of Parent Rights Petition Filing to Adjudication

Among children for whom a TPR petition is filed in a given period, the time from petition filing to adjudication of the TPR.

Quartile Time from TPR Filing to Adjudication for Children with an Initial TPR Petition Filing: New York State, 2006-2016
TPR Filing Entry Cohort Years

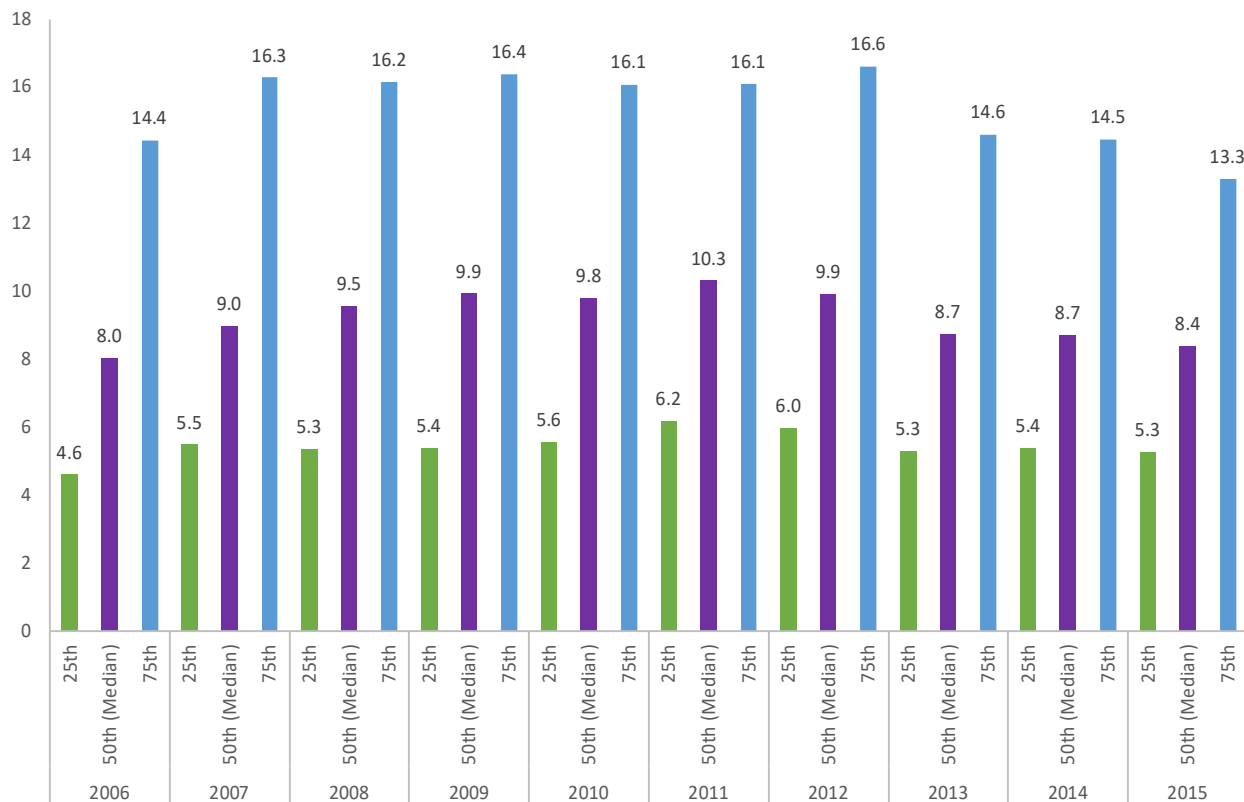


TPR Filing Entry Cohort	N=	Quartile		
		25th	50th (Median)	75th
2006	2478	3.9	6.4	12.2
2007	2690	4.7	7.8	14.5
2008	2432	4.5	7.7	13.9
2009	2694	4.6	7.8	13.8
2010	2325	4.4	8.2	14.5
2011	2275	5.2	8.9	14.9
2012	2547	4.8	8.9	14.2
2013	2293	4.3	7.4	13.2
2014	2081	4.2	7.2	12.8
2015	2057	4.2	7.4	12.8
2016	1935	4.5	7.6	

Time from TPR Petition Filing to Disposition

Among children for whom a TPR petition is filed in a given period and one or more grounds for termination is established, the time from TPR petition filing to disposition.

Quartile Time from TPR Filing to Disposition for Children with an Initial TPR Petition Filing: New York State, 2006-2015
TPR Filing Entry Cohort Years



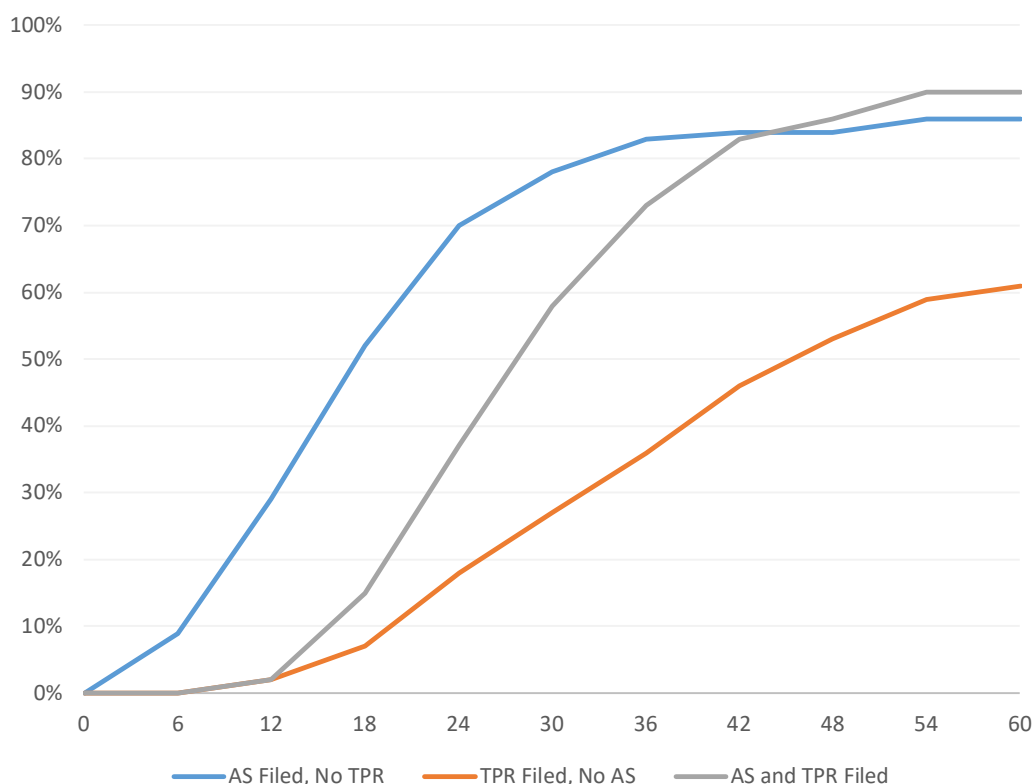
TPR Filing Entry Cohort	N=	Quartile		
		25th	50th (Median)	75th
2006	1715	4.6	8.0	14.4
2007	1816	5.5	9.0	16.3
2008	1561	5.3	9.5	16.2
2009	1762	5.4	9.9	16.4
2010	1490	5.6	9.8	16.1
2011	1477	6.2	10.3	16.1
2012	1576	6.0	9.9	16.6
2013	1416	5.3	8.7	14.6
2014	1256	5.4	8.7	14.5
2015	1134	5.3	8.4	13.3

Time from Entry into Out-of-Home Care to Child Freed

Of the children who entered out-of-home care for the first time for reasons of abuse, neglect or voluntary surrender and for whom an initial TPR and/or Adoption Surrender petition is filed within 36 months of entering, the time from entry to child freed.

* For purposes of this metric, a child is considered 'freed' when he/she has had at least one disposition of a certain type on an Adoption Surrender and TPR docket and there is an outcome indicating the child is freed in UCMS. The freed date is the date of the last disposition on the Adoption Surrender or TPR docket.

Time from Entry into Out-of-Home Care to Child Freed by Filing Type: New York State, 2012 Entry Cohort Year

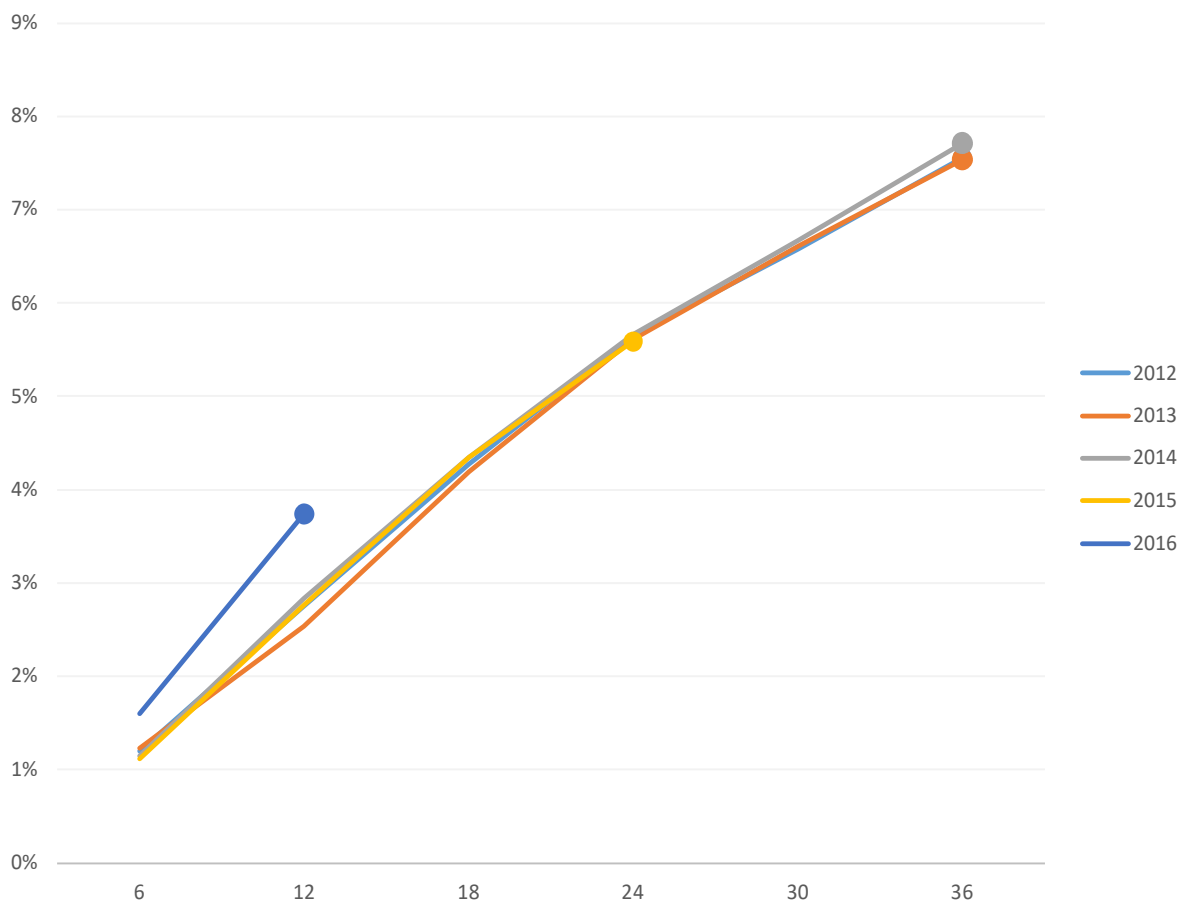


Filing Type	Entry Cohort Year	N*=	Months											
			0	6	12	18	24	30	36	42	48	54	60	
AS Filed, No TPR	2012	207	0%	9%	29%	52%	70%	78%	83%	84%	84%	86%	86%	
TPR Filed, No AS	2012	957	0%	0%	2%	7%	18%	27%	36%	46%	53%	59%	61%	
AS and TPR Filed	2012	555	0%	0%	2%	15%	37%	58%	73%	83%	86%	90%	90%	

Subsequent Abuse/Neglect Filings after the Initial Period of Court Jurisdiction Ends

For children whose period of court jurisdiction ends, the proportion of children who are the subject of a subsequent petition alleging abuse/neglect filed within a given period of time.

Cumulative Percentage of Children with Subsequent Abuse/Neglect Petitions Filed within Time Intervals of Exiting Court Jurisdiction: New York State, 2006-2016 Exit Cohort Years



Exit Cohort Year	Exit Cohort N=	Months from Exiting Court Jurisdiction					
		6	12	18	24	30	36
2006	15507	1.1%	2.6%	3.9%	5.3%	6.2%	7.2%
2007	17212	1.2%	2.6%	3.6%	4.8%	5.7%	6.5%
2008	18645	1.1%	3.0%	4.5%	5.5%	6.2%	6.9%
2009	19458	1.0%	2.4%	3.7%	4.8%	5.7%	6.6%
2010	19285	1.1%	2.4%	3.5%	4.6%	5.5%	6.2%
2011	19110	0.9%	2.5%	3.7%	4.6%	5.5%	6.5%
2012	17577	1.2%	2.8%	4.3%	5.7%	6.6%	7.6%
2013	16504	1.2%	2.5%	4.2%	5.6%	6.6%	7.5%
2014	16013	1.1%	2.8%	4.3%	5.7%	6.7%	7.7%
2015	17772	1.1%	2.8%	4.3%	5.6%		
2016	18533	1.6%	3.7%				